

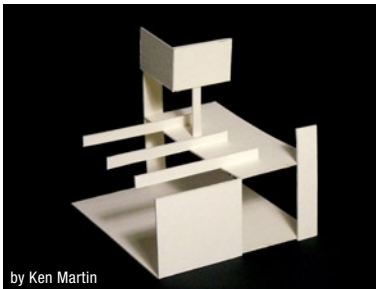
by Michael Bassen



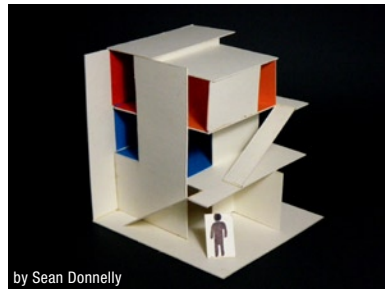
by Daniel Barusch

Student work from foundation level Architecture Design I. In this project, the students worked on many iterations of spatial models, 2d drawings and perspective drawings. With each generation a new architectural concept was investigated while building on previous discoveries. Some of the concepts discussed were space, organization, order/geometry, proportion and color.

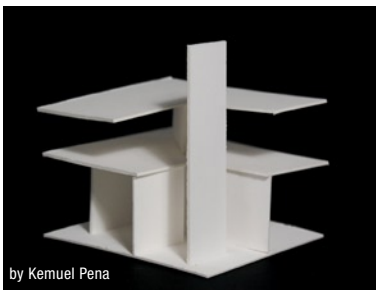
Architectural Design 1
SUNY Delhi
2009



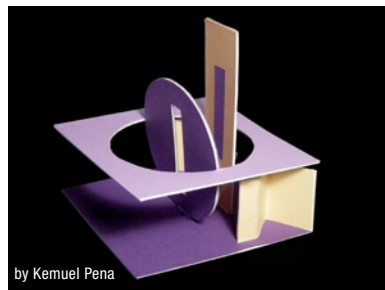
by Ken Martin



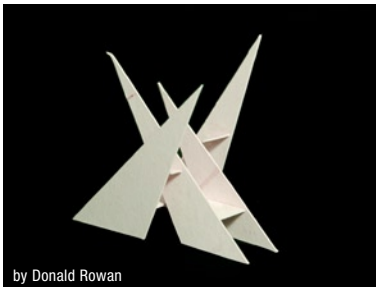
by Sean Donnelly



by Kemuel Pena



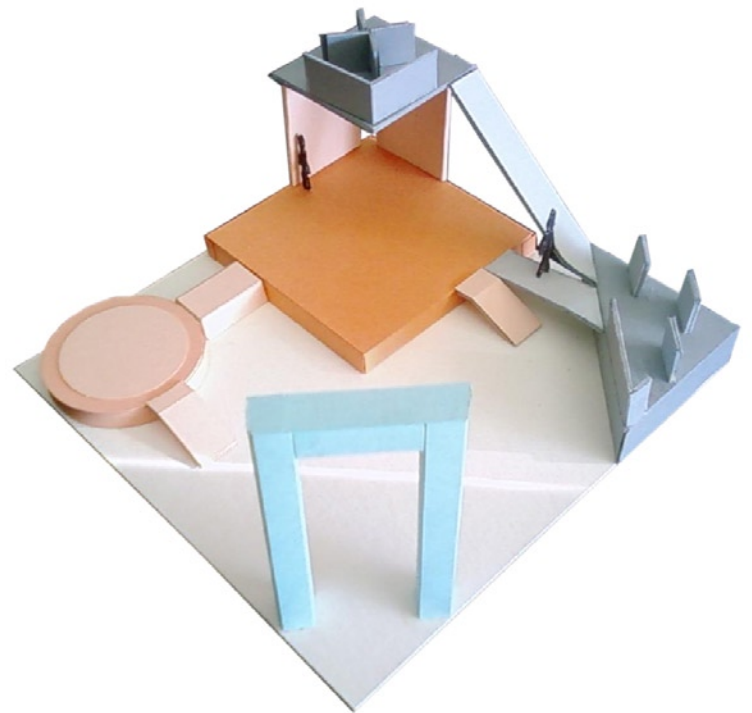
by Kemuel Pena



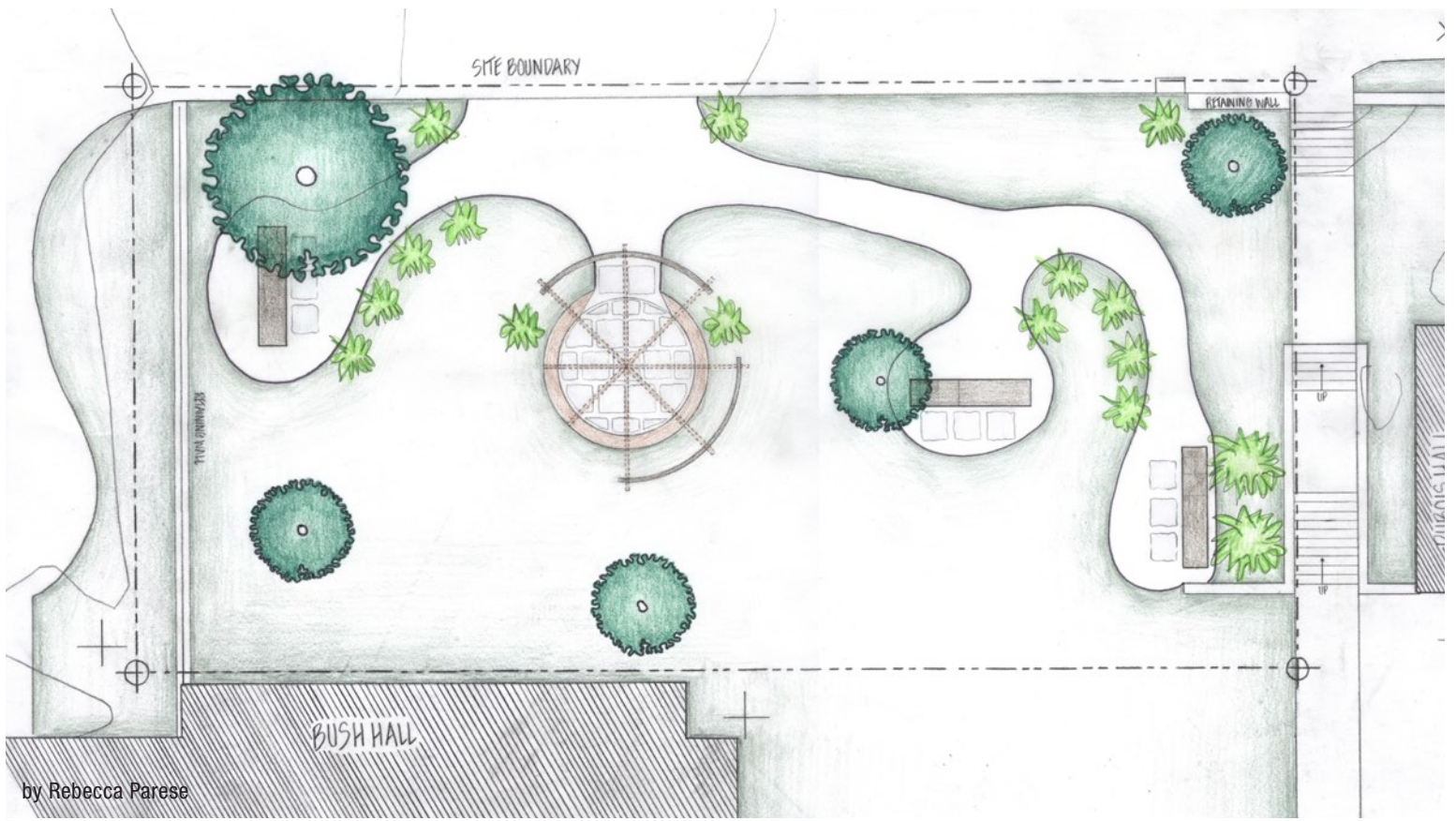
by Donald Rowan



by Bryan Mah



by Steven McCormack

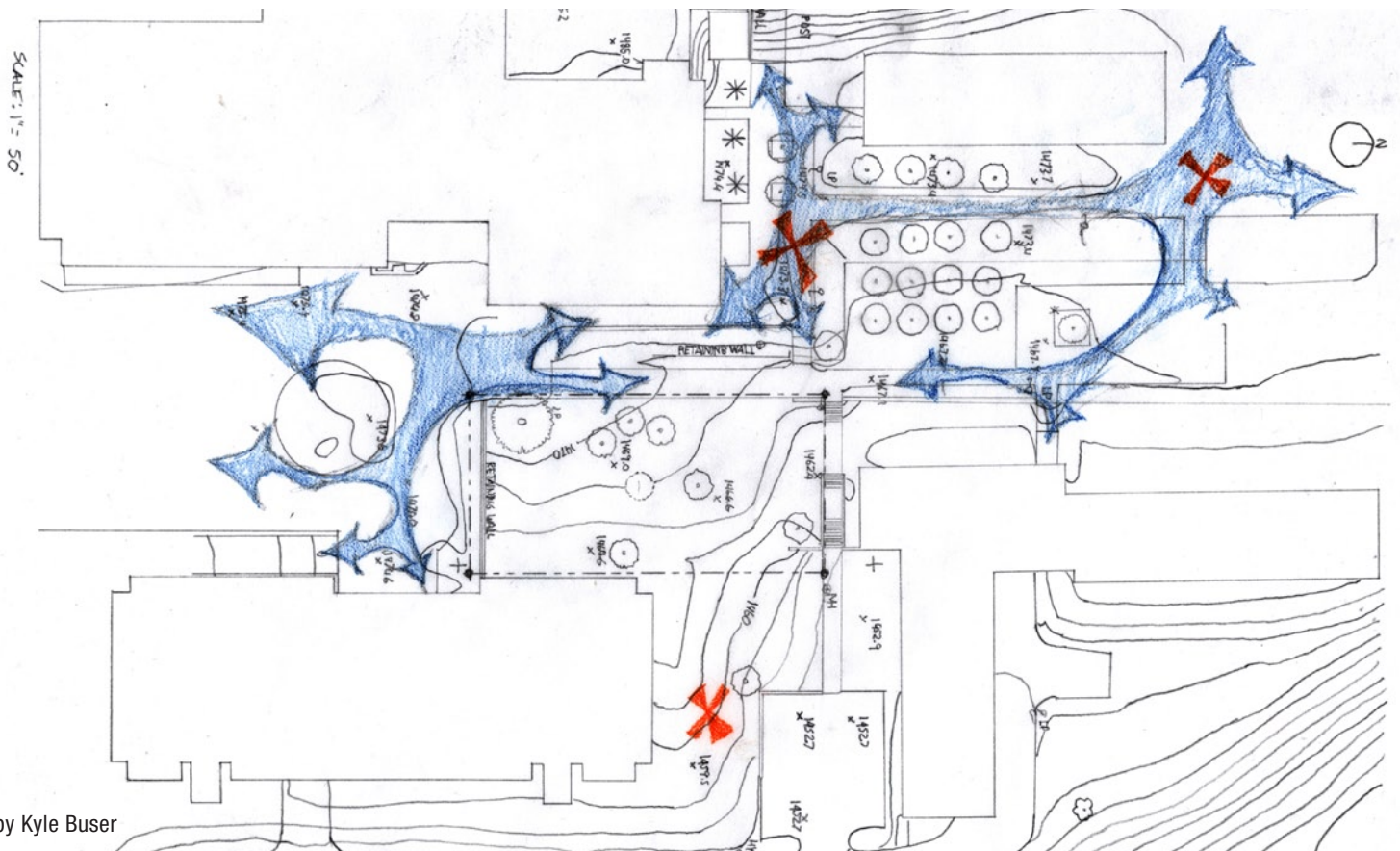


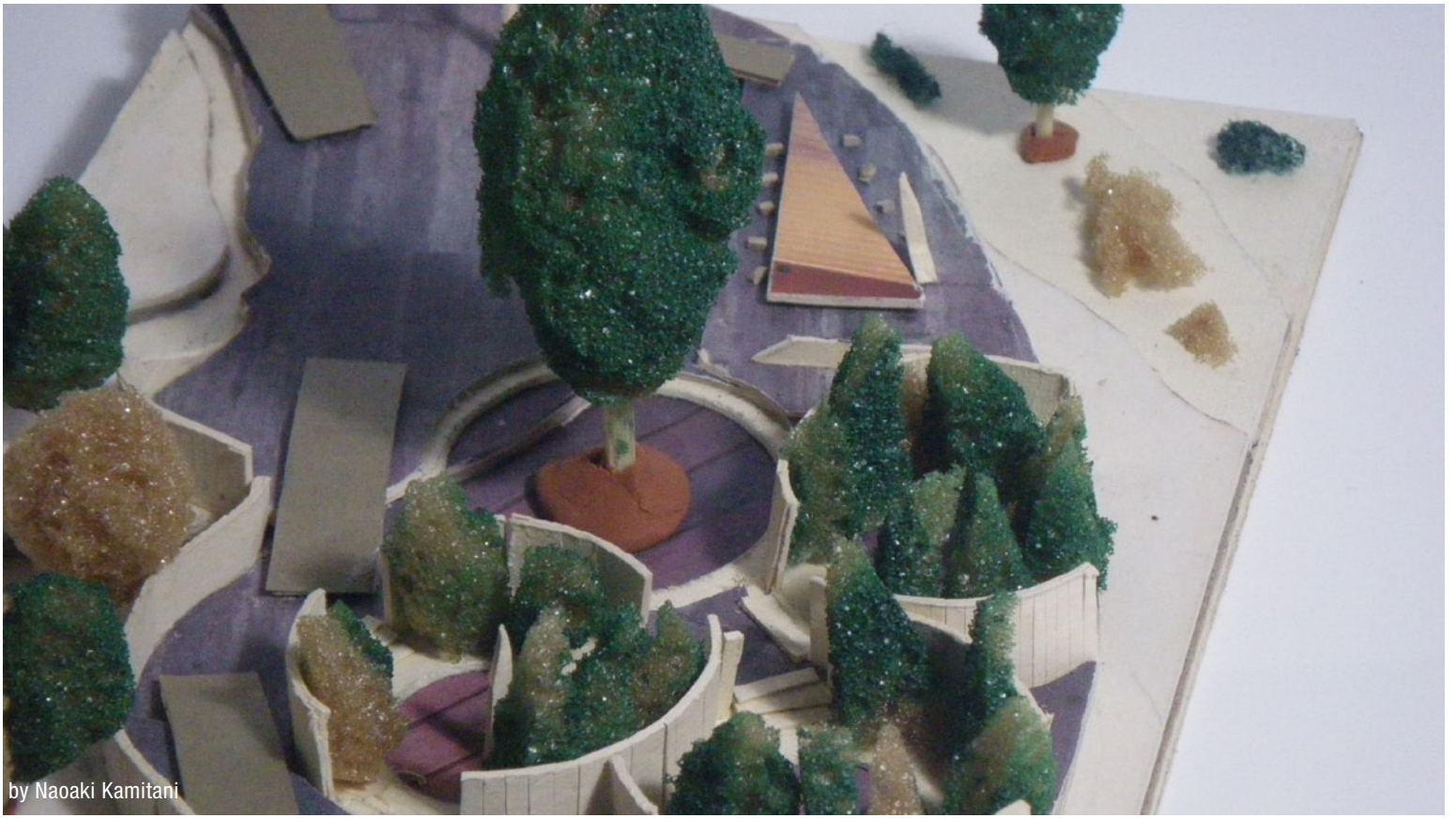
In this project, students designed spaces for a site on the SUNY Delhi campus. The first phase was to analyze the site and document their findings with diagrams. The focus of the project was to use walls, platforms, plinths, colonnades, hedges and trees to create spaces.

Architectural Design I

SUNY Delhi

2009





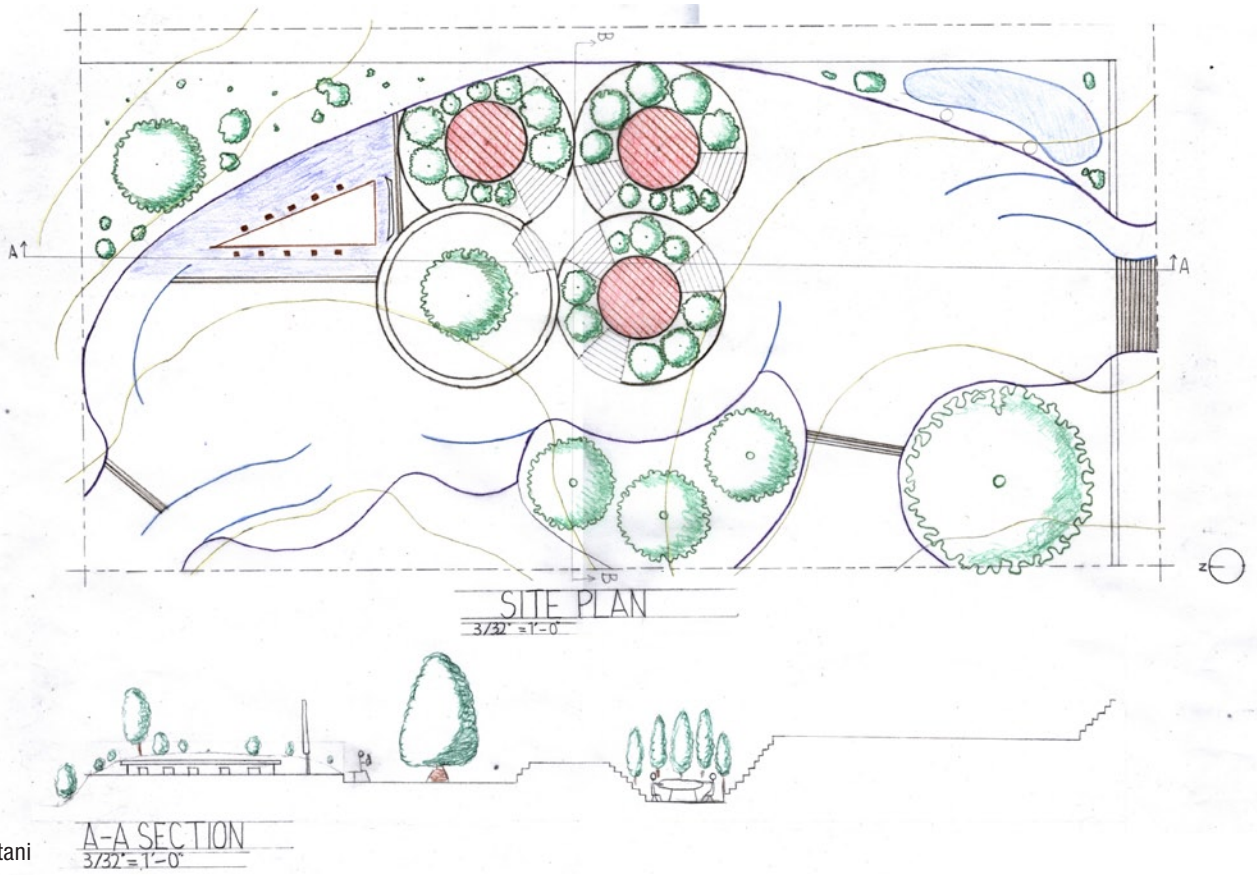
by Naoaki Kamitani

More images from the campus site project.

Architectural Design I

SUNY Delhi

2009



by Naoaki Kamitani



by Michael Bassen

[More Images from the campus site project](#)

Architectural Design I

SUNY Delhi

2009



by Nathan Schmidt



by Bryan Mah

More images from the campus site project.

Architectural Design I

SUNY Delhi

2009



by Christopher Silliman