



# Facilities Master Plan State University of New York College of Technology at Delhi

SUCF Project No. 25819

Master Plan Update – Phases I, II, III  
October, 2009



# Agenda

- > Schedule
- > Phase I – Campus Profile
- > Phase II – Assessment of Conditions
- > Phase III – Analysis of Space Needs
- > Planning Charrette
- > Discussion



# Schedule

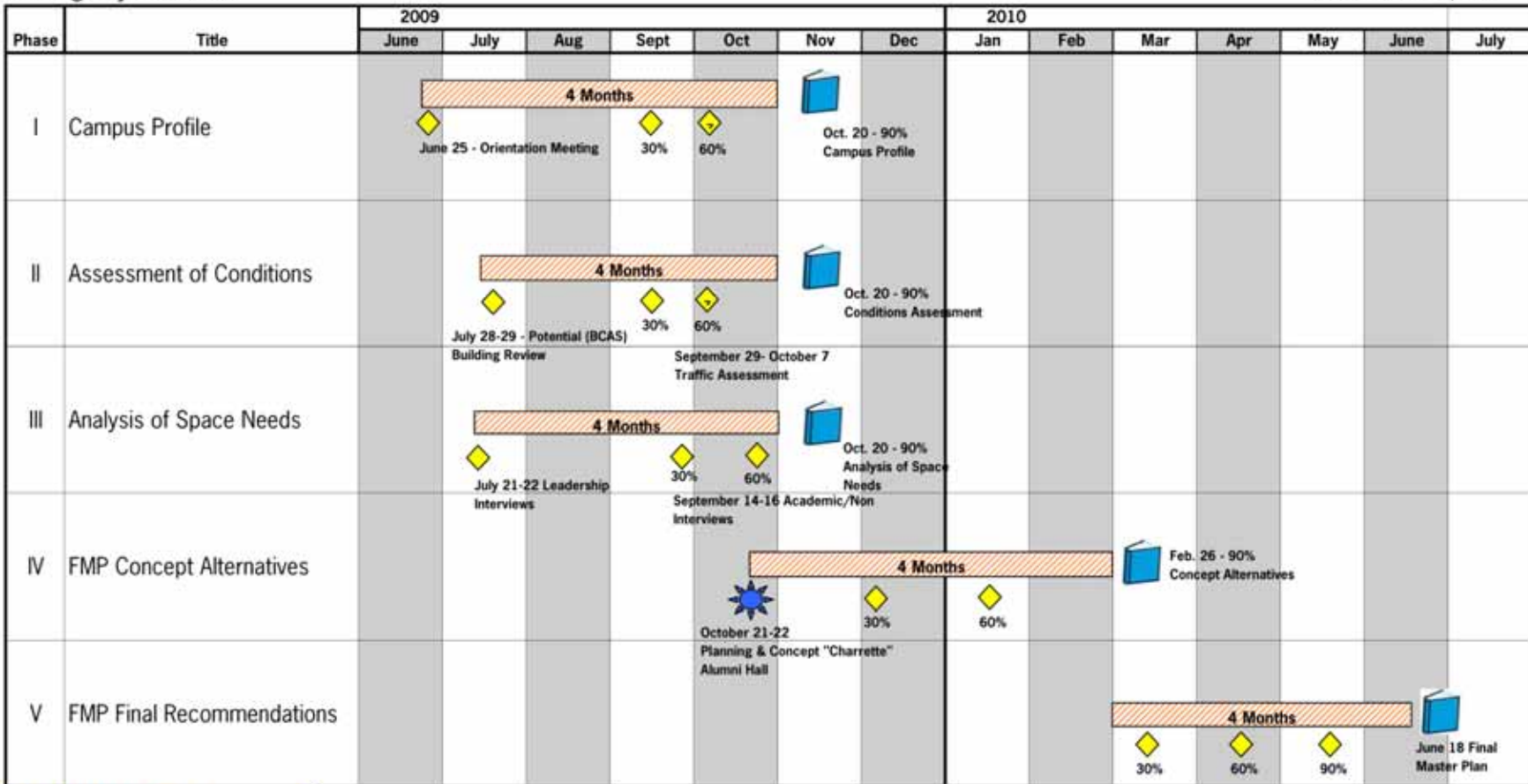
## SUNY Delhi Facilities Master Plan

SUCF #: 25819




SA Project #: 09030

Working Project Schedule

Revised October 16, 2009



**SARATOGA ASSOCIATES**

-  Major Project Meetings
-  Planning & Assessment "Charrette"
-  Project Documentation

**SARATOGA ASSOCIATES**

MGT of America | M/E Engineering | Collado Engineering | Fisher Associates | VJ Associates

Master Plan Update Phases III / October 22, 2009  
State University of New York College of Technology at Delhi

# Phase I: Campus Profile

- > Interest
- > Growth
- > Enrollment

Home > News And Events >

## Campus News

### SUNY DELHI SETS ENROLLMENT RECORD

**October 14 , 2009 , Delhi, N.Y. ...** A record number of 3,157 students are enrolled at SUNY Delhi this fall, the highest total in college history. The previous all-time high of 2,971 students was set in Fall 2008.

Applications to SUNY Delhi are also at record levels with more than 6,000 students applying for enrollment in Fall 2009. Applications to SUNY Delhi have increased by more than 42 percent over the last three years.

"SUNY Delhi's focus on offering unique academic programs is producing impressive results," says President Candace Vancko. "We are consistently earning national and state recognition for academic excellence and that has helped make SUNY Delhi a very popular choice among college-bound students," she says.

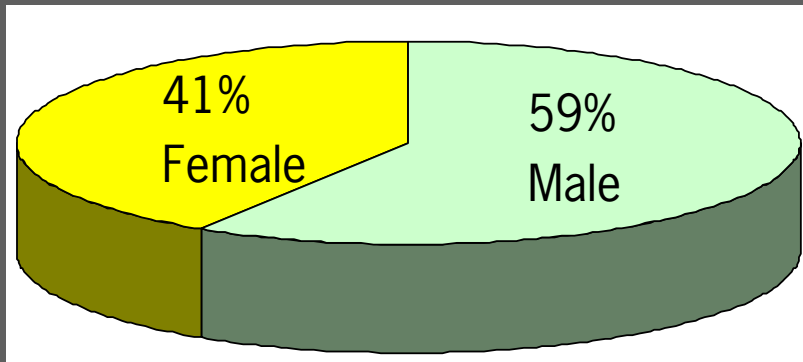
SUNY Delhi has been ranked among the Top 50 Baccalaureate Colleges in the North by U.S. News and World Report for three consecutive years. The college also scored very high marks in the 2009 SUNY Student Opinion Survey, ranking in the Top 10 of all SUNY campuses in 28 categories, including quality of instruction, academic advising, acquiring the knowledge and skills needed for a career, community service, and athletic and recreation facilities. Delhi ranked first or second among SUNY's Colleges of Technology in more than 50 percent of the categories on the Student Opinion Survey.

Students enrolled in baccalaureate programs now account for nearly 17 percent of Delhi's total enrollment. Leading the way are programs offered on-line and off site. An on-line RN to BSN program, the first of its type in New York State, has grown from 20 students to more than 200 in less than two years. Delhi has offered baccalaureate degrees on the campus of Schenectady County Community College since 2003 and will launch four-year programs at Tompkins Cortland Community College in Dryden and Onondaga Community College in Syracuse beginning in January.

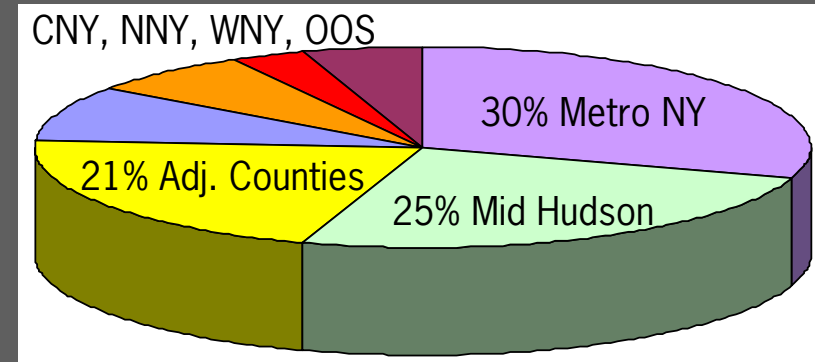
Delhi also offers an on-line baccalaureate in Veterinary Technology Management, an Associate Degree in Nursing (ADN) through the Partnership for Nursing Opportunities with Bassett Hospital, and an on-line associate degree in Electrical Construction and Instrumentation for the International Brotherhood of Electrical Workers (IBEW) in Latham.

# Phase I: Campus Profile

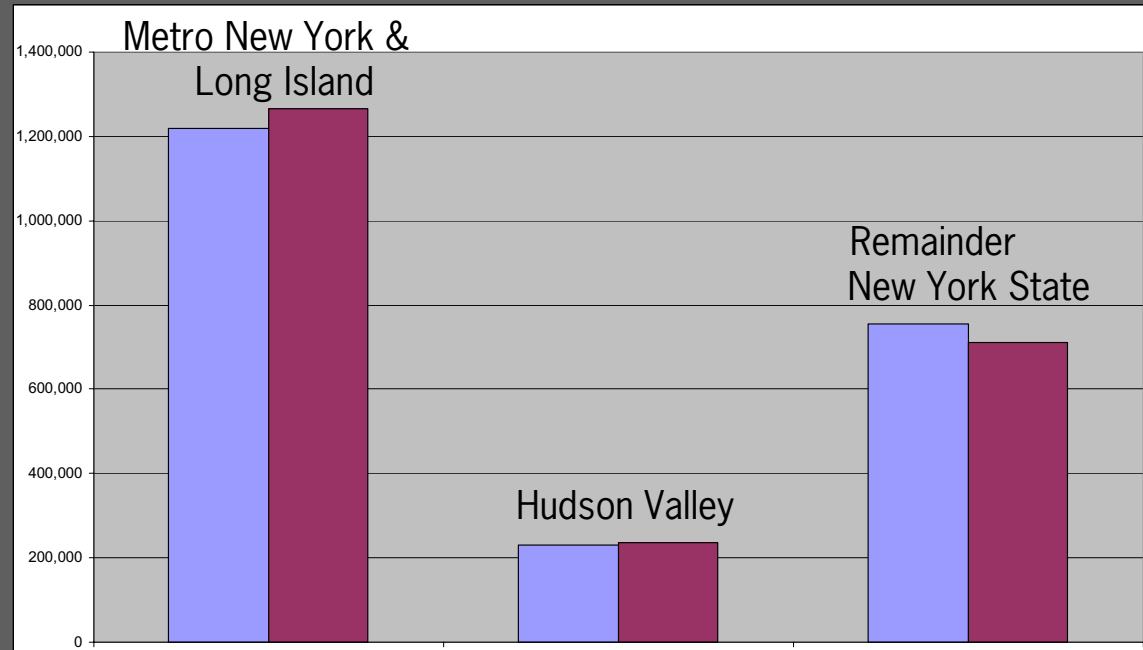
Population by Gender



Population by Origin



New York State  
College Entry  
to Age 24  
.2% Growth  
Between 2006  
and 2015





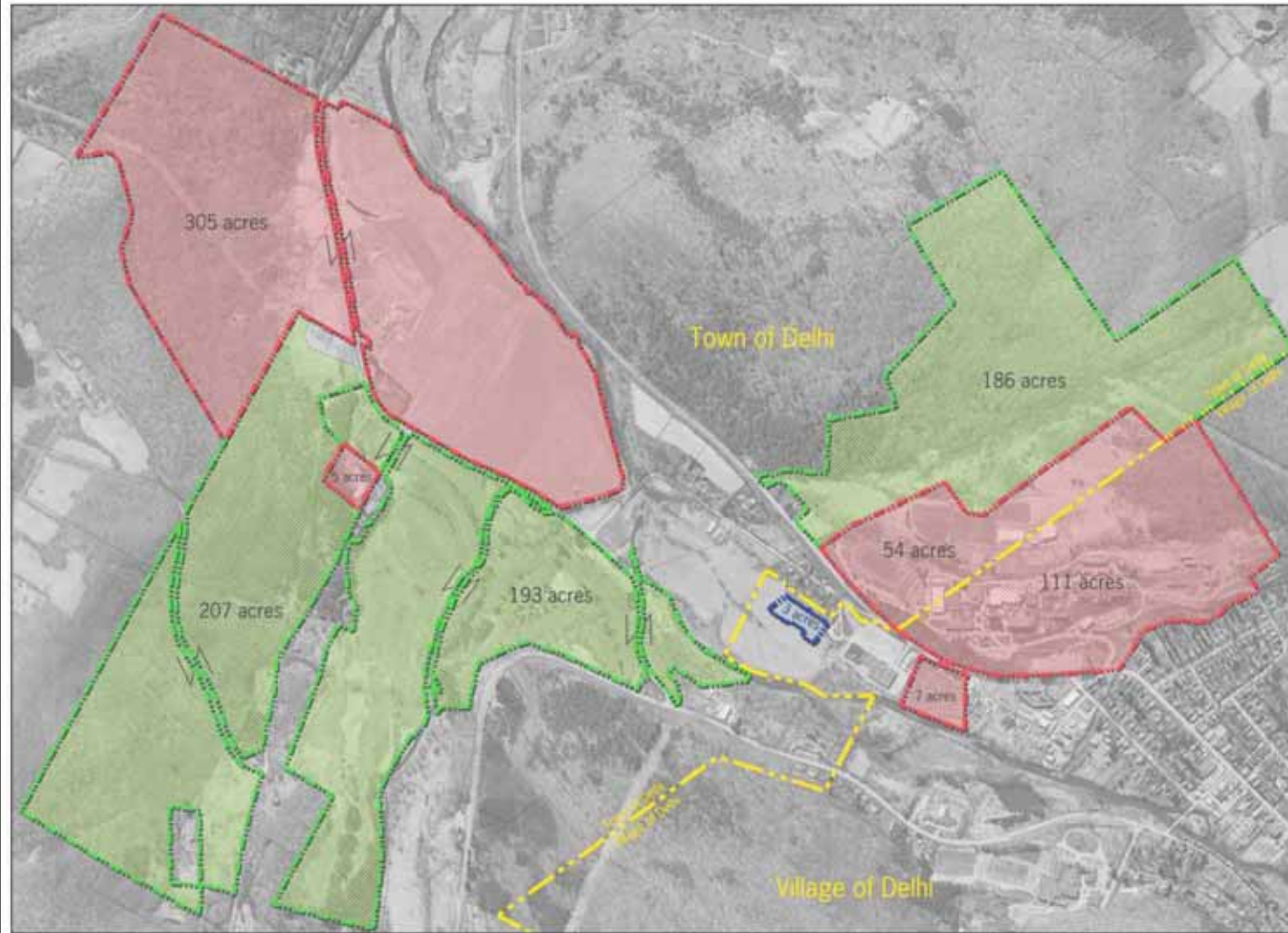
## Phase I: Campus Profile

- > Veterinary Science Technology
- > Nursing Program
- > Business and Hospitality Program
- > Golf Course Management

### Guiding Principles

- > Enrollment Growth
- > Online and Off-Campus
- > Diversity
- > Community Service
- > Increase Baccalaureate Degrees

# Phase I: Campus Profile



## DRAFT PROPERTY OWNERSHIP

SUNY DELHI  
Facility Master Plan  
October 2009

### KEY

#### PROPERTY OWNERSHIP

- ▭ SUNY AT DELHI
- ▭ COLLEGE FOUNDATION AT DELHI
- ▭ RIVERVIEW AT DELHI, INC.

Note: Aerial Photography was flown in 2004 and does not accurately depict any improvements / expansions undergone since that time.

SA PROJECT # 0903030 - JULY # 020810  
Copyright © 2009 Saratoga Associates. All Rights Reserved.  
This map is computer generated using data acquired by Saratoga Associates from various sources and is intended only for reference, conceptual planning and presentation purposes. This map is not intended for and should not be used to establish boundaries, property lines, location of objects or to provide any other information typically needed for construction or any other actions where engineered plans or land surveys are required.  
© 2009 RIVERVIEW, INC. 3280 Development/Construction/RCR/ Master Plan.mxd

**SARATOGA  
ASSOCIATES**

Landscape Architects, Architects,  
Engineers, and Planners, P.C.  
NEW YORK CITY | SARATOGA SPRING | SHARLOTTE



# Phase II: Assessment of Conditions

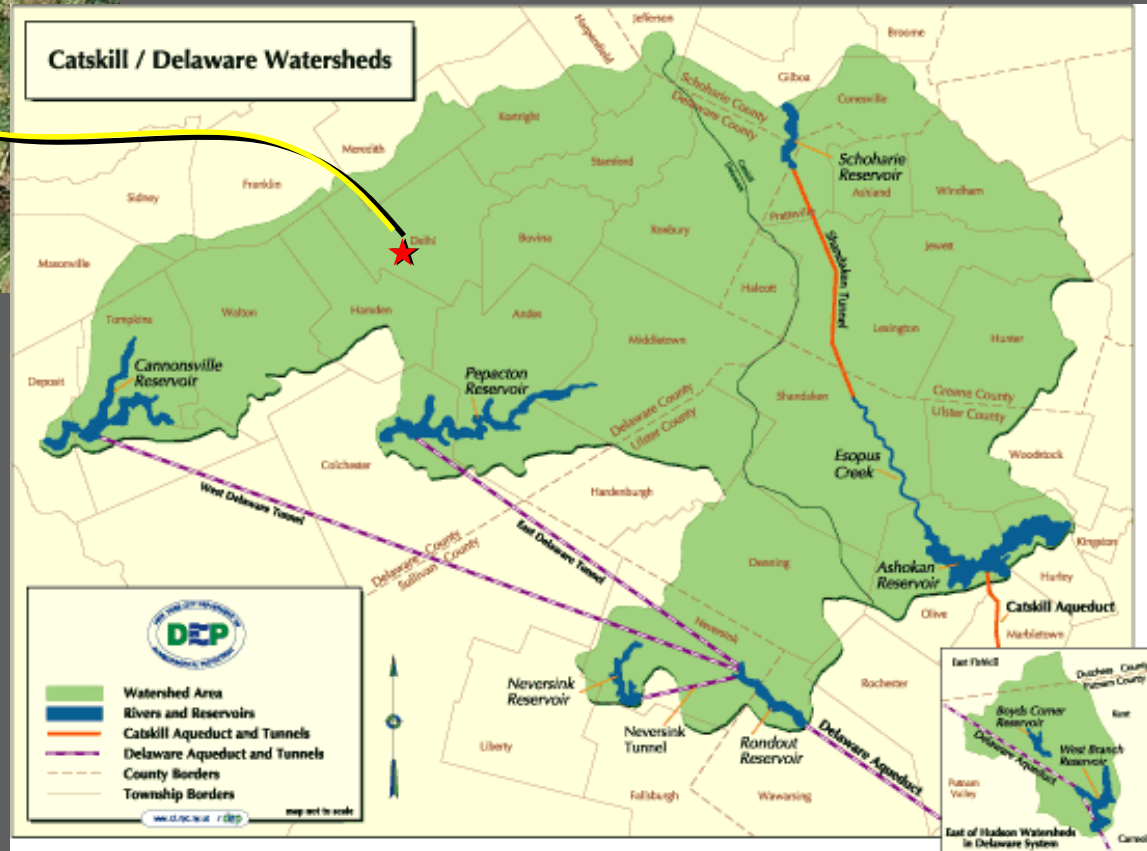
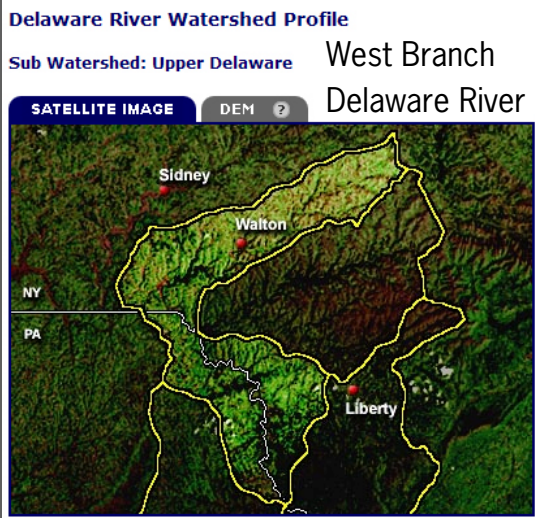
- > Context
- > Natural
- > Physical
- > Mapping
- > Interviews w/  
campus  
personnel
- > Historical  
records



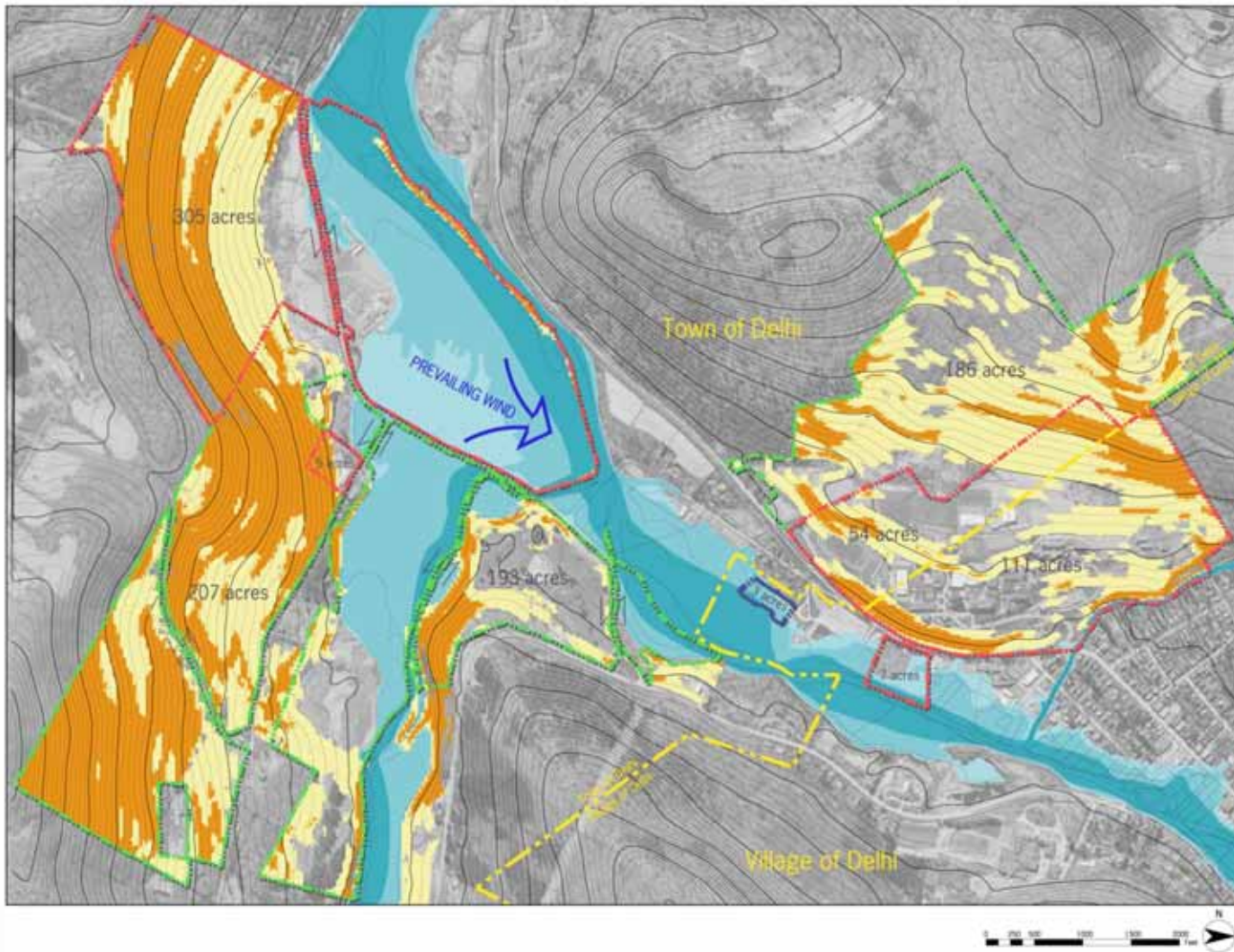


# Phase II: Assessment of Conditions

- > Environmental Considerations
- > Storm Water Management
- > Use and Capacity



# Environmental Context



DRAFT  
**ENVIRONMENTAL  
ANALYSIS**

SUNY DELHI  
Facilities Master Plan  
October 2009

**KEY**

PROPERTY OWNERSHIP

- SUNY AT DELHI
- COLLEGE FOUNDATION AT DELHI
- RIVERVIEW AT DELHI, INC

SLOPE

- 15%-25% SLOPE
- 25%+ SLOPE

FLOODPLAIN

- FLOODWAY
- 100 YEAR FLOODPLAIN
- 500 YEAR FLOODPLAIN

Note: Aerial Photography was flown in 2004 and does not accurately depict any improvements / expansions undergone since that time.

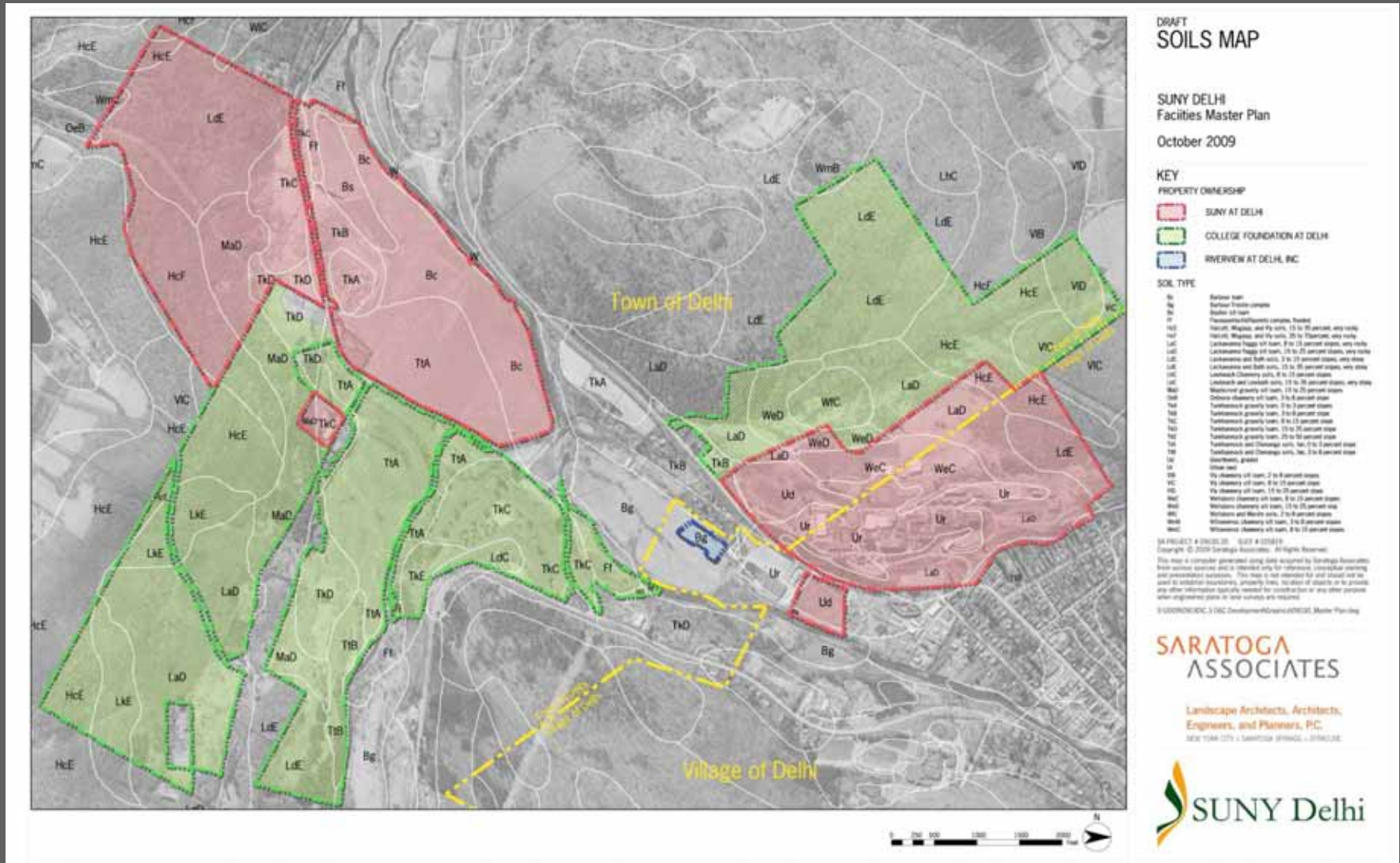
SA PROJECT # 090120 SLIP # 020119  
Copyright © 2009 Saratoga Associates. All Rights Reserved.  
This map is computer generated using data obtained by Saratoga Associates from various sources and is intended only for reference, informational purposes and presentation purposes. This map is not intended for and should not be used to establish boundaries, property lines, location of easements or to provide any other information typically needed for construction or any other purpose without independent verification of such information and records.  
S:\090120\090120\_3\090120\090120\_3\090120\_3\_Saratoga\090120\_Master Plan.dwg

**SARATOGA  
ASSOCIATES**

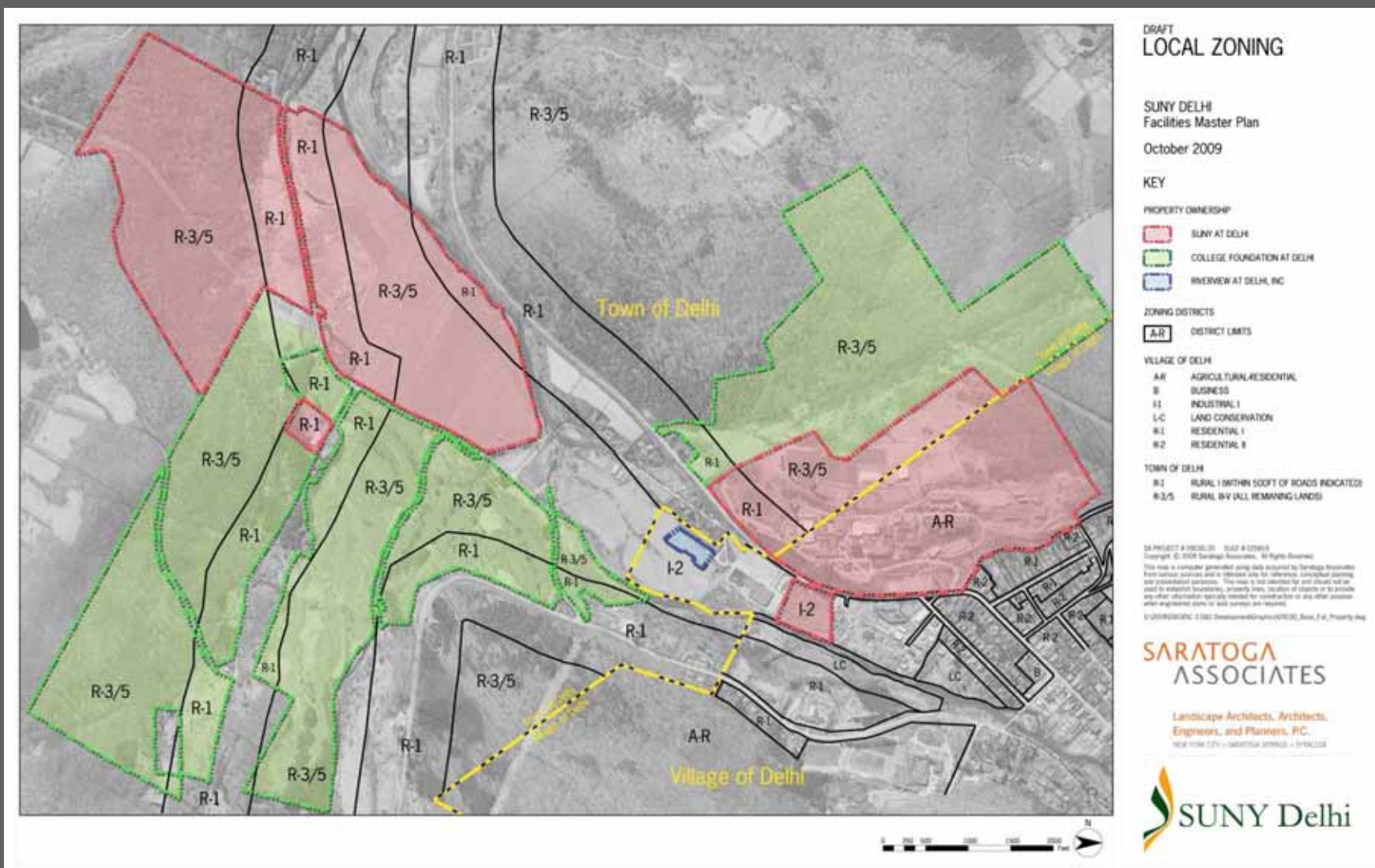
Landscape Architects, Architects,  
Engineers, and Planners, P.C.  
NEW YORK CITY • SARATOGA SPRINGS • CORNEAUX



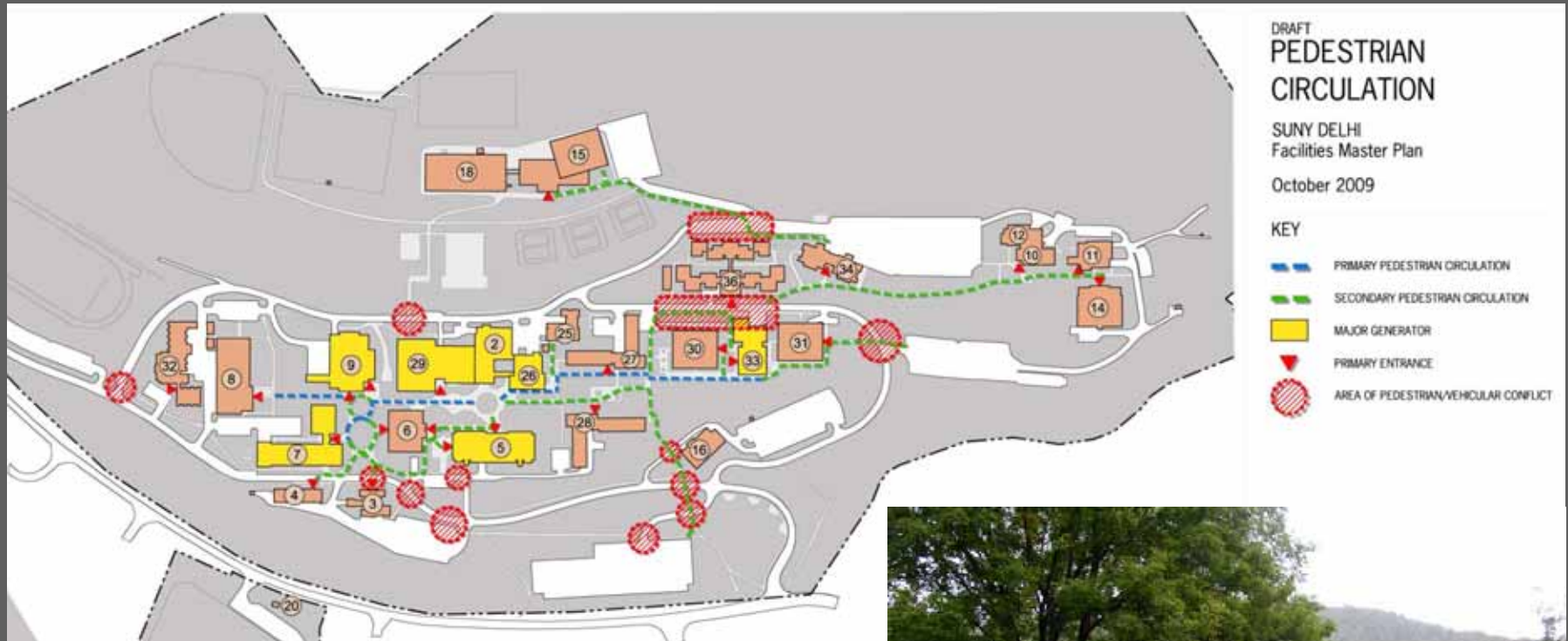
# Environmental Context



# Land Use and Zoning



# Pedestrian Circulation



- > Conflict areas
- > Pavement condition fair to poor



# Parking

- > Utilization
- > Pavement condition, fair



## PARKING SUMMARY

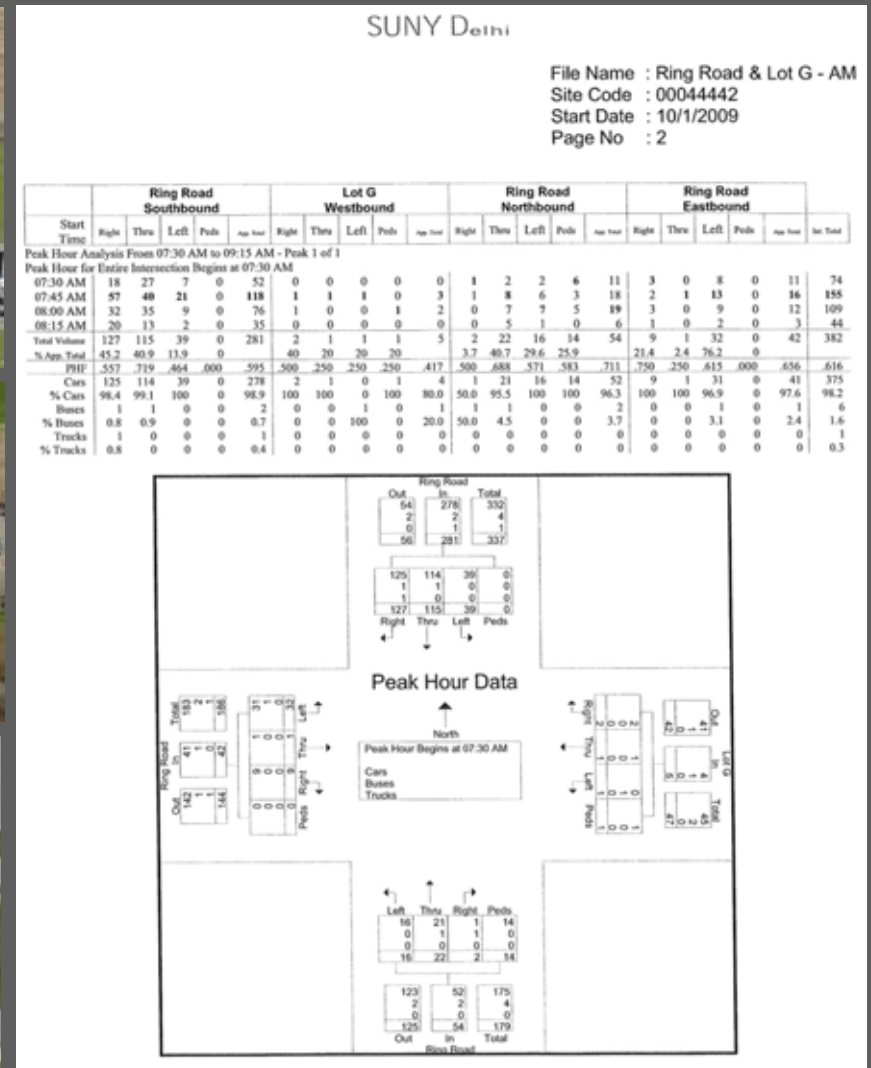
LOT	NAME	STAFF	STUDENT	HANDICAPPED	OTHER	TOTAL
A	UP/DAY CARE	14	103	2	8	128
B	RUSSELL HALL	19	27	4	3	53
C	GERRY HALL	11	0	2	1	14
D	O'CONNOR HALL	10	163	0	0	173
E	THURSTON HALL	107	0	7	3	117
F	CATSKILL HALL	0	228	2	2	232
G	BELOW LPD	0	253	0	0	253
H	SMITH HALL	45	0	5	0	50
I	TRACK	0	87	0	0	87
J	SMITH HALL	29	0	0	0	29
K	ALUMNI & FOREMAN HALLS	22	0	1	0	23
L	DUBOIS HALL	8	0	1	0	16
M	WALL SERVICE	7	0	1	0	8
N	BACK ROADWAY	0	0	4	67	71
O	FOREMAN	6	0	1	0	7
P	BOILER ROOM	5	0	0	0	5
Q	FARNSWORTH	14	0	2	0	16
R	MURPHY SERVICE	1	0	4	0	5
S	BUSH VISITOR	1	0	4	4	9
T	E-TECHTECH CAMPUS	0	43	0	0	43
U	CLARK FIELD HOUSE	0	0	6	54	60
TOTAL		307	904	45	140	1396

# Vehicular Circulation



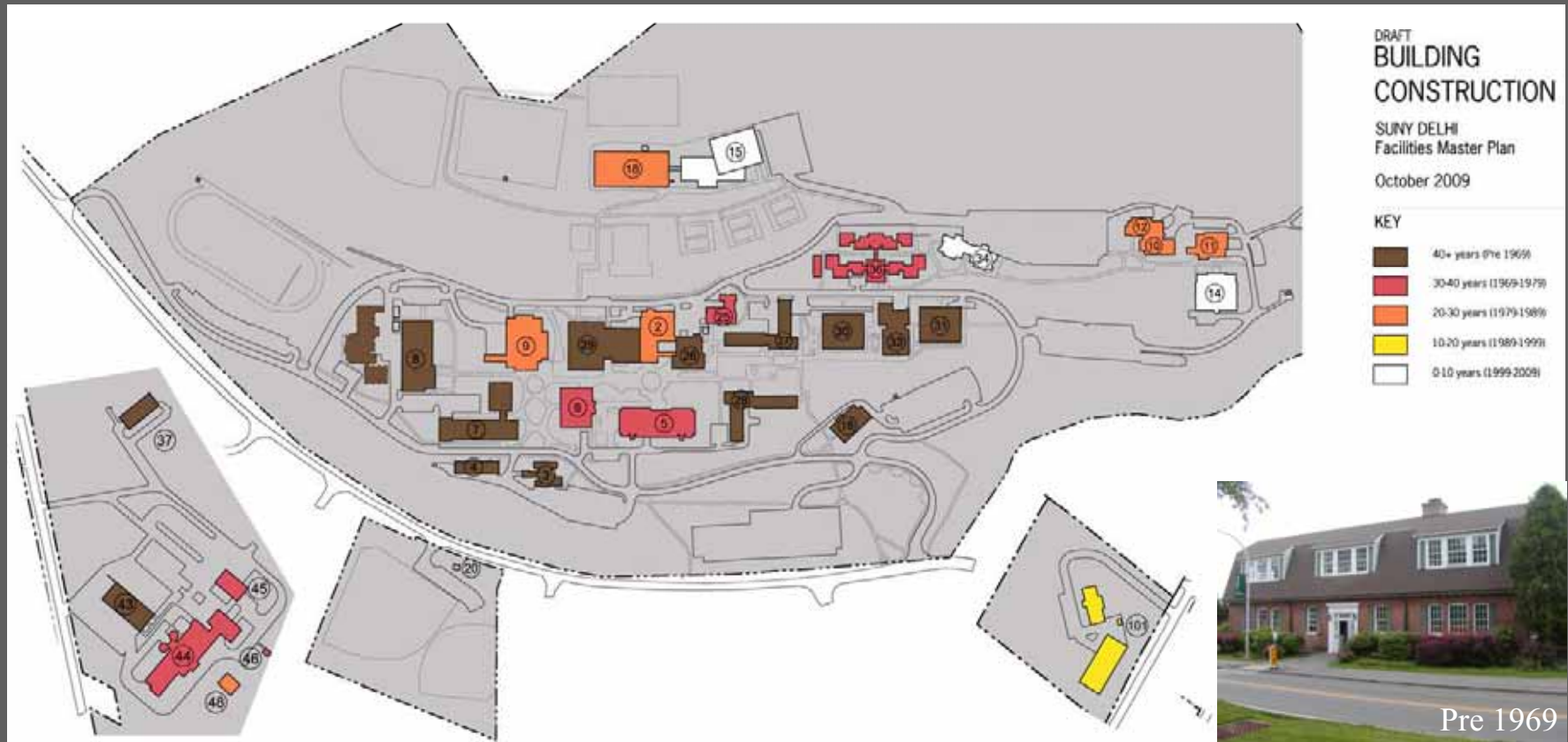
# Vehicular Circulation

- > Sept. 29-30 data collection
- > Ring road / intersections serve relatively low traffic volumes
- > Service vehicle conflicts
- > Traffic speed





# Campus Building Construction



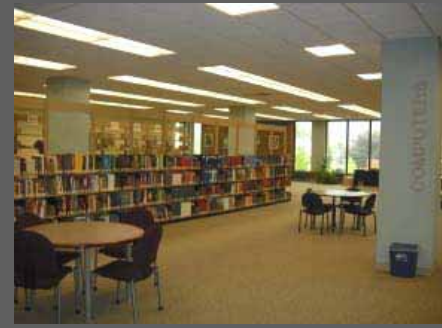
## Resources

- > Onsite Building Assessment
- > Review of BCAS
- > Review of Past Capital Improvement Projects
- > Interviews with Campus Personnel
- > Historical Records

# Building Condition Assessment

- > Condition of Building Envelope (Roof, Windows, Structure and Façade)
- > Identify any renovations that have occurred on the building
- > Identify any persistent problems with the building
- > General condition of all interior finishes (Floors, Walls and Ceilings).
- > Condition of Mechanical Systems (Heating, Ventilation, Cooling and Controls).
- > Condition of Plumbing Systems (Water, Sanitary, Fire Suppression and Storm Water).
- > Condition of Electrical System (Service/Distribution, Emergency power/lighting, Fire Alarm, Lighting, Telephone/Data and Specialty Systems).

# Overall Building Condition Assessment



## Facility Evaluation

- > Building type not well suited for classroom uses
- > Building in need of renovation

# Thurston Hall

## > Comparison to BCAS

### Architectural

- > Exterior Envelope remains unchanged.
- > Cosmetic Improvements to interior occurred in 2008. Ceilings and walls scored much higher.

### Electrical

- > All circuit breaker panels should be replaced immediately.
- > Add emergency lighting to stair and large rooms.
- > Lowering all pullstations to 4'-0" to comply with ADA.

### Mechanical / Plumbing

- Renovation recommended if the use of the building is changed. There are limited toilet rooms, and mechanical ventilation is not provided.



# Farnsworth Hall

## Facility Evaluation

- > Building type suited to current use
- > Some spaces could be utilized more efficiently
- > Building in need of renovation

## > Comparison to BCAS

### Architectural

- > Remains substantially unchanged.
- > Minor renovations to Architectural Technology Studio, Faculty Lounge and Conference Room.

### Electrical

- > The electric service is very under utilized.

### Mechanical / Plumbing

- > Systems in fair to good condition. Issues are age of the equipment and use of electricity for heating.



## Facility Evaluation

- > Building type suitable for current uses
- > Exterior doors and windows in need of replacement

# Bush Hall

## > Comparison to BCAS

### Architectural

- > Roof was replaced recently. The balance of the Exterior Envelope remains unchanged.
- > Minor renovation to first floor lobby in 2009.

### Electrical

- > Lowering all pull stations to 4'-0" to comply with ADA.
- > Installing ceiling mounted horn strobes between book stacks
- > Ceiling mounted occupancy sensors in restrooms.
- > Install additional lighting between book stacks.

### Mechanical / Plumbing

- > New stream to hot water heating system.
- > Existing air handler in basement not operational



## Facility Evaluation

- > Open floor plan suitable for dining Hall use
- > Classroom / lab uses adjacent to dining hall efficient
- > Classroom / lab uses ill-suited in current space

# MacDonald Hall

## > Comparison to BCAS

### Architectural

- > Roof was replaced recently. The balance of the Exterior Envelope remains unchanged.
- > Lower Level Lobby area renovated recently.



### Electrical / Mechanical / Plumbing

- > Add smoke detectors in dining area.
- > Install occupancy sensors in restrooms with Passive Infrared and Ultrasonic type sensor.
- > Add lighting in Mechanical room
- > Renovation of mechanical systems are recommended. Systems are well maintained and have reached the end of their useful lifetime.
- > Opportunities exist to save energy with a system renovation by using DDC controls and matching hood exhaust air flow rates to cooking demand.

# Analysis of Space Needs

- > Interviews
- > Space Inventory (PSI)
- > Campus walk-through
- > Floor plans
- > Projections
- > Course and class schedule – Fall 2009
- > Analysis
- > Displays and presentations
- > Feedback
- > Final analysis





# Analysis of Space Needs

## > Interviews

- > September 15 & 16 interviews
- > 55 Faculty/Staff & Administration
- > Perceived space needs
- > Potential program growth
- > Space verification

Academic / Administrative Questionnaire  
September 2009  
Page 3 of 4

E. Indicate Below Your Department's Perceived Immediate (1-5 Years) and Future (6-10 Years) Additional Space Needs (beyond existing assigned space). Use your best judgment given your departments academic program, staffing goals and enrollment projections.

PERCEIVED SPACE NEEDS (cumulative)	Above and Beyond My Existing Space, in the Next 1-5 Years I Will Need the Following Additional Spaces	In Addition (to the previous 5 years), in the Next 6-10 Years, I Will Need the Following Additional Spaces
Faculty/Staff Office(s):	_____ offices	_____ offices
Faculty/Staff Shared Office(s):	_____ offices @ _____ faculty members per office	_____ offices @ _____ faculty members per office
Admin. Support (Secretary/Administrative Assistant/ Student Work Space):	_____ stations _____ reception seats	_____ stations _____ reception seats
Department Support Space, check as appropriate:	<input type="checkbox"/> Files <input type="checkbox"/> Copy Area <input type="checkbox"/> Coffee <input type="checkbox"/> Storage Room <input type="checkbox"/> Work Room _____ other	<input type="checkbox"/> Files <input type="checkbox"/> Copy Area <input type="checkbox"/> Coffee <input type="checkbox"/> Storage Room <input type="checkbox"/> Work Room _____ other
Conference/Seminar:	_____ rooms at _____ seats each <input type="checkbox"/> Share? <input type="checkbox"/> Dedicated?	_____ rooms at _____ seats each <input type="checkbox"/> Share? <input type="checkbox"/> Dedicated?
Special Lab/Prep Rm., Please Describe:	_____ approx. sq.ft.	_____ approx. sq.ft.
Departmental /Faculty Resource Center/Library:	_____ approx. sq.ft.	_____ approx. sq.ft.
Other ?	_____ approx. sq.ft.	_____ approx. sq.ft.

Bush Hall Rm 142 TUESDAY 9/15/2009	Bush Hall Rm TBD TUESDAY 9/15/2009
Lynda Fender MGT	Rob Southerland SA
Monica Liddle Mathematics	Marty Greenfield Director of Student Activities
Adriene Clifford Accounting	Amy Brown Purchasing
Thomas Recinella Culinary Arts	Michele Defreese Student Success
Robert Mazzei Director of Admissions	Doug McKee Health and Physical Education
x	Lynne Smith Data Processing & Comp. Inf. Sys.
Rick Golding Restaurant and Food Service Mgmt	Michael Branigan Parks & Recreation
Nancy Hughes Director Financial Aid	Robert Backus Athletic Director
Barbara Sturdevant Business Management & Admin.	Yudis Contreras Foreign Language



# Analysis of Space Needs

## > PSI and Building Space Review – Sanford Hall

> Existing space by use

### SANFORD HALL FIRST FLOOR

SUNY DELHI  
Facilities Master Plan  
October 2009

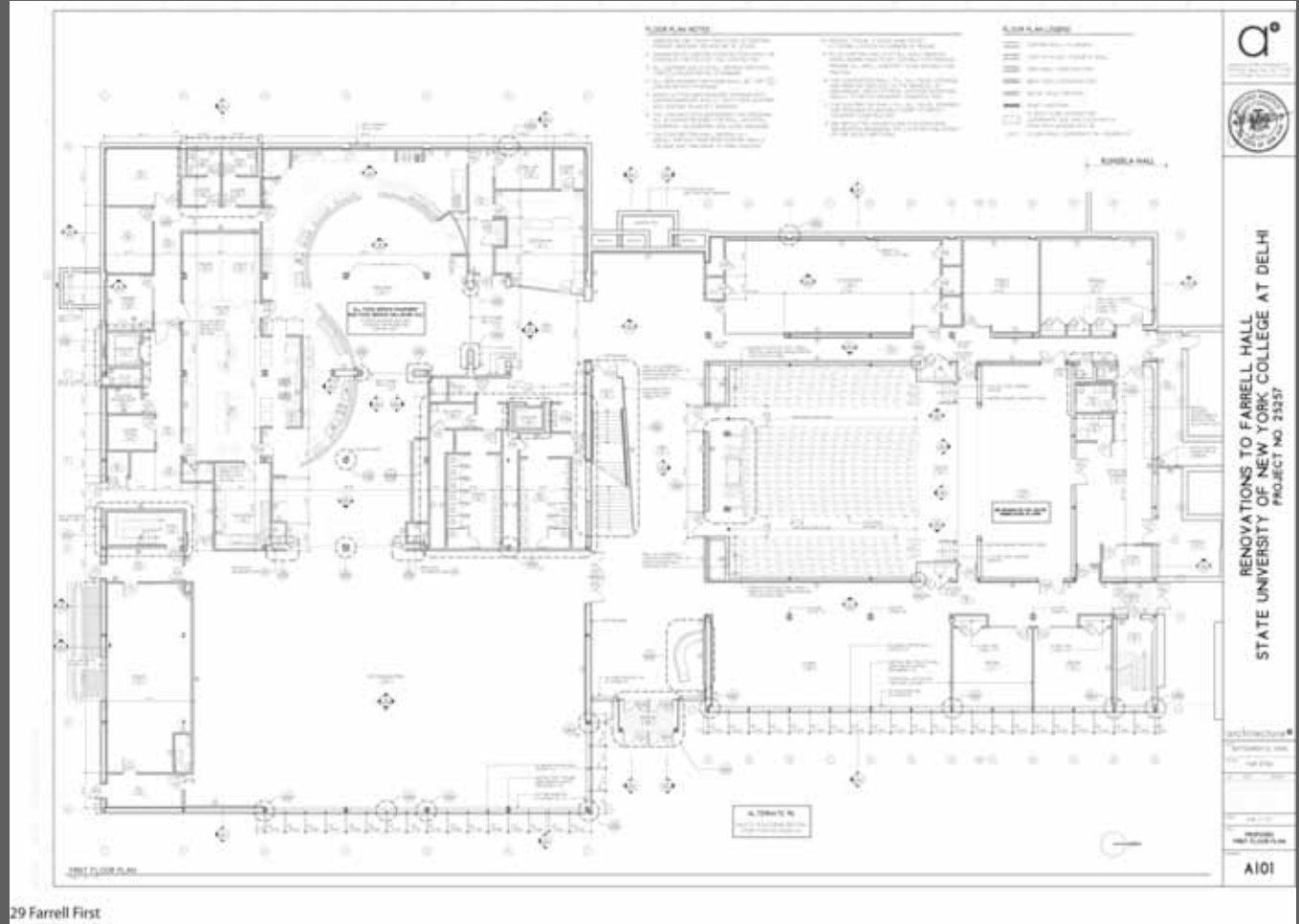
KEY	ROOM USE CATEGORIES
<span style="color: red;">■</span>	CLASSROOM/LECTURE HALLS
<span style="color: pink;">■</span>	LABORATORY
<span style="color: lightgreen;">■</span>	SPECIAL USE
<span style="color: lightblue;">■</span>	DEPARTMENTAL SUPPORT
<span style="color: green;">■</span>	LIBRARY
<span style="color: blue;">■</span>	ADMINISTRATIVE
<span style="color: purple;">■</span>	STUDENT/FACULTY ACTIVITY
<span style="color: cyan;">■</span>	ASSEMBLY & EXHIBITION
<span style="color: brown;">■</span>	CENTRAL SERVICE
<span style="color: grey;">■</span>	GENERAL BUILDING SERVICES
<span style="color: yellow;">■</span>	NON-ASSIGNABLE SPACE
<span style="color: white;">■</span>	UNASSIGNED SPACE
<span style="color: orange;">■</span>	MEDICAL
<span style="color: magenta;">■</span>	RESIDENCE



# Analysis of Space Needs - Future

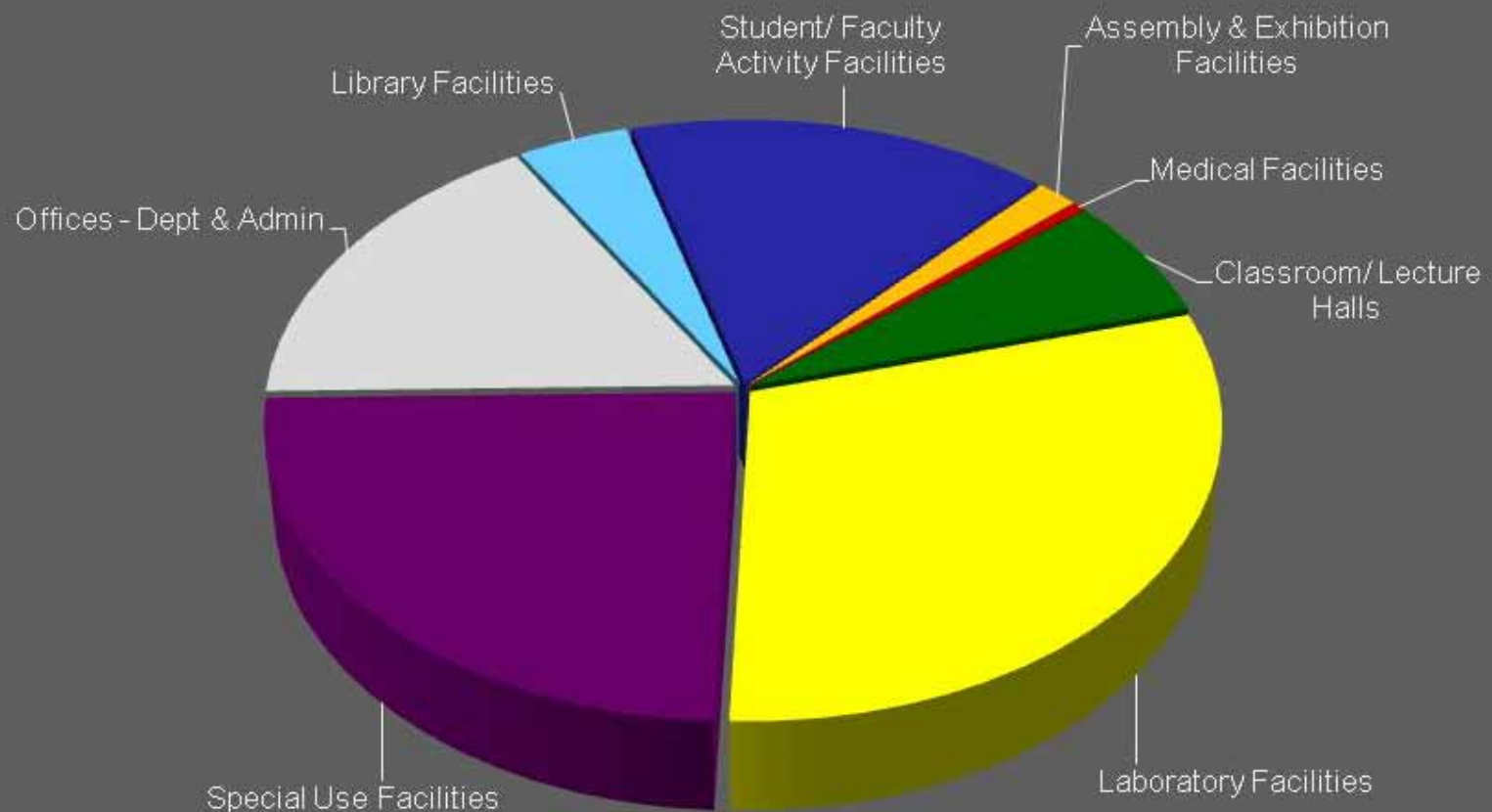


> Construction of Farrell Hall



# Analysis of Space Needs

## Existing Space by Type (in NSF)



# Analysis of Space Needs

## Existing Space by Type (in NSF)

CLASSROOM/LECTURE HALLS	29,569
LABORATORY FACILITIES	131,414
SPECIAL USE FACILITIES	105,220
OFFICES - DEPT & ADMIN	73,280
LIBRARY FACILITIES	18,567
STUDENT/FACULTY ACTIVITY FACILITIES	70,670
ASSEMBLY & EXHIBITION FACILITIES	6,810
MEDICAL FACILITIES	<u>2,281</u>
<b>TOTAL E&amp;G SPACE</b>	<b>437,809</b>

- > Education and general space
- > Excludes residential, custodial, maintenance & non-assignable
- > Laboratories reflect the technical nature of the institution
- > Special use reflects the farm and phys ed
- > Includes new Farrell Hall spaces

# Analysis of Space Needs

- > 2% growth per year (on-campus)
- > ~985 FTE-2025
- > SUNY projections – steady, initial growth then decline then rebound
- > Ratio of faculty & staff to students remains consistent

## Projections -- on-campus (Fall FTE)

	<u>2009</u>	<u>2020</u>	<u>2025</u>
Enrollment	2,642	3,285	3,627
Faculty	160	198	219
Staff	197	234	258

*[Excludes maintenance / custodial / grounds staff]*

# Analysis of Space Needs

## Academic Space: Classrooms (in NSF)

> 40 total classrooms

> Guidelines

16sf > 400 sf  
20sf < 400 sf

> Learning style moving to table and chairs – 23-25 sf station – 6,200 sf more

<u>Room Type</u>	<u># Rms</u>	<u># Stations</u>	<u>Total NSF</u>	<u>NSF/Station</u>
<b>Classrooms</b>	<b>38</b>	<b>1,350</b>	<b>25,023</b>	<b>18.5</b>
<b>Lecture</b>	<b>2</b>	<b>358</b>	<b>4,546</b>	<b>12.7</b>

<u>Room Sizes</u>	<u># Rms</u>	<u># Stations</u>	<u>Total NSF</u>	<u>NSF/Station</u>
1 – 15				
16 – 25	12	259	5,581	21.5
26 – 40	15	519	9,402	18.1
41 – 60	9	428	7,777	18.2
61 – 100	2	144	2,263	15.7
100 +	2	358	4,546	12.7



# Analysis of Space Needs

## Academic Space: Class Laboratories (in NSF)

- > 70 class laboratories (acad)
- > Guidelines
  - >Varies by discipline
  - >Range: 30 sf to 218 sf
- > Predominant use could be other than scheduled class activity

<u>Discipline</u>	<u># Rms</u>	<u># Stations</u>	<u>NSF/Station</u>	
			<u>Actual</u>	<u>Guideline</u>
Applied Science & Rec	6	116	39.4	40
Bus Admin / CIS / IT	6	179	41.0	40
Hospitality / Culinary Arts	7	135	57.2	109
Liberal Arts & Sciences	10	250	44.8	50
Nursing	2	120	20.5	80
Learning Center/Library	1	24	24.0	40
Student Life	1	24	24.0 est	30
Technology	27	577	97.9	109-218
Vet Tech	10	166	41.3	60

## Analysis

- > Culture for faculty to share offices
- > Office Guidelines
  - > Faculty-120 sf
  - > Admin-120 sf
  - > Senior Staff-180 sf
  - > Deans-240 sf
  - > Senior leadership-320 sf
  - > President-400 sf
  - > Conference Room Guidelines
    - > 240 sf – 600 sf

# Analysis of Space Needs

## Office & Conference Room Space (in NSF)

<u>Office Type</u>	<u># stations</u>	<u>NSF</u>	<u>NSF/Station</u>
Faculty	158	18,126	114.7
Admin	213	32,005	150.3

[ Admin includes all non-faculty, e.g., senior leadership, deans, student workers, etc. plus division offices & reception plus contract staff e.g., CAD]

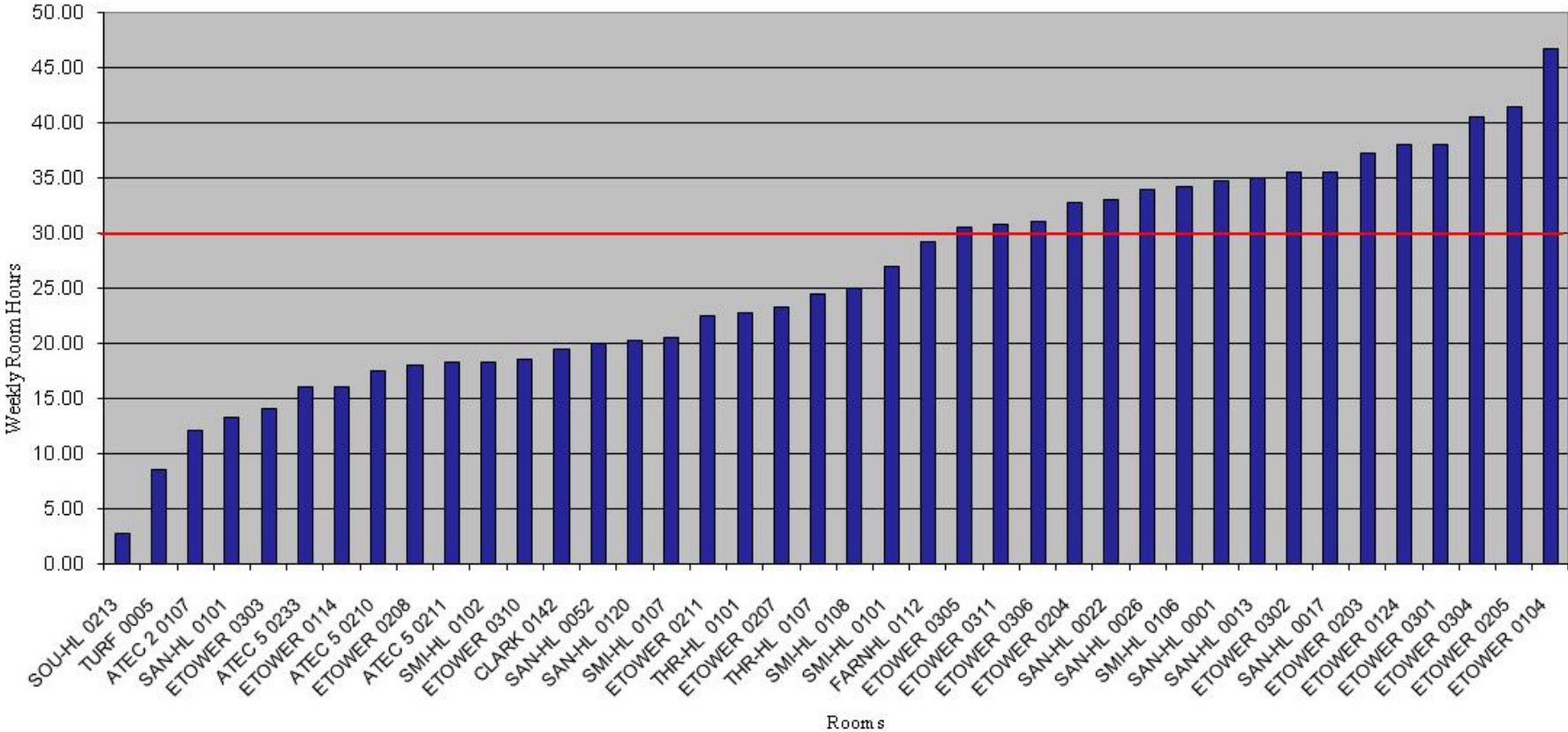
<u>Office Type</u>	<u>NSF</u>
Service and Support	11,614

[Includes significant records storage in basement of Bush Hall, old showers in Farnsworth Hall, now used for storage, and new space in Farrell Hall that duplicated existing space]

<u>Room Type</u>	<u># rooms</u>	<u>NSF</u>	<u>NSF/Room</u>
Conference Rooms	20	6,853	343

# Analysis of Space Needs

SUNY DELHI COLLEGE  
Classroom (1010 & 1100)  
Scheduled Weekly Room Hours by Room



# Analysis of Space Needs

## SUNY DELHI COLLEGE

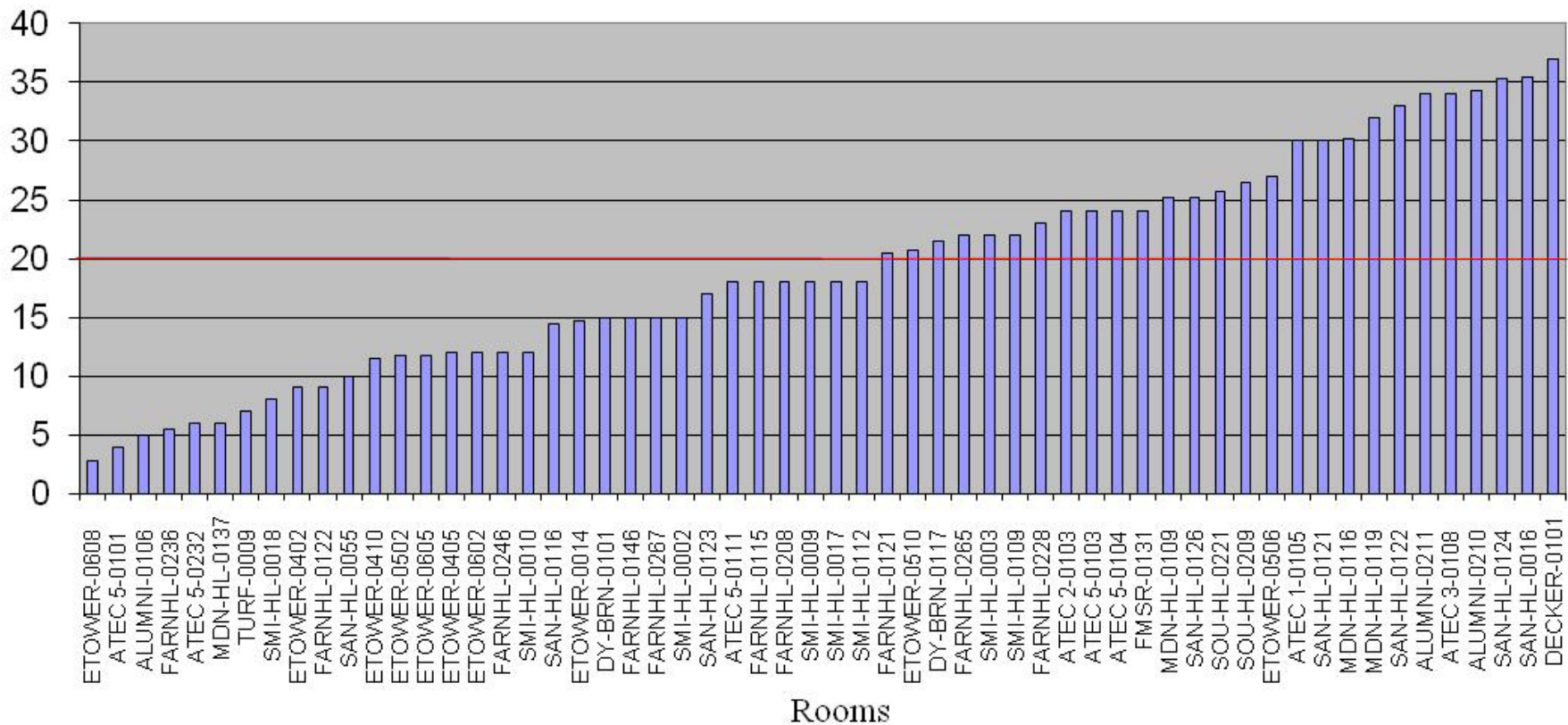
Weekly Utilization of Classrooms (1001 & 1100) with Scheduled Use

Descending Order of Station Use

Building	Room #	Area (ASF)	Physical Capacity	Total Scheduled Room Hours	Possible Weekly Student Contact Hours	Actual Weekly Student Contact Hours	Station Use Based on Physical Capacity
ETOWER	0204	593	34	32.75	1,114	772	69%
THR-HL	0107	768	49	24.50	1,201	787	66%
ETOWER	0124	908	42	38.00	1,596	1,038	65%
ETOWER	0306	756	50	31.00	1,550	950	61%
SAN-HL	0022	706	49	33.00	1,617	968	60%
ATEC 5	0233	774	43	16.00	688	407	59%
SAN-HL	0013	940	49	35.00	1,715	1,004	59%
ATEC 5	0211	811	42	18.25	767	447	58%
THR-HL	0101	644	38	22.75	865	495	57%
SMI-HL	0107	640	36	20.50	738	421	57%
SMI-HL	0106	1,296	78	34.25	2,672	1,461	55%
SAN-HL	0001	1,162	110	34.75	3,823	2,022	53%
TURF	0005	779	28	8.50	238	108	45%
ETOWER	0303	579	24	14.00	336	151	45%
FARNHL	0112	1,422	60	29.25	1,755	788	45%
SMI-HL	0108	967	66	25.00	1,650	714	43%
SAN-HL	0101	357	18	13.25	239	89	37%
ETOWER	0104	3,384	248	46.75	11,594	3,812	33%
<b>Total Scheduled Rooms:</b>	<b>40</b>	<b>29,569</b>	<b>1,708</b>	<b>25.91</b>	<b>51,341</b>	<b>30,742</b>	<b>60%</b>

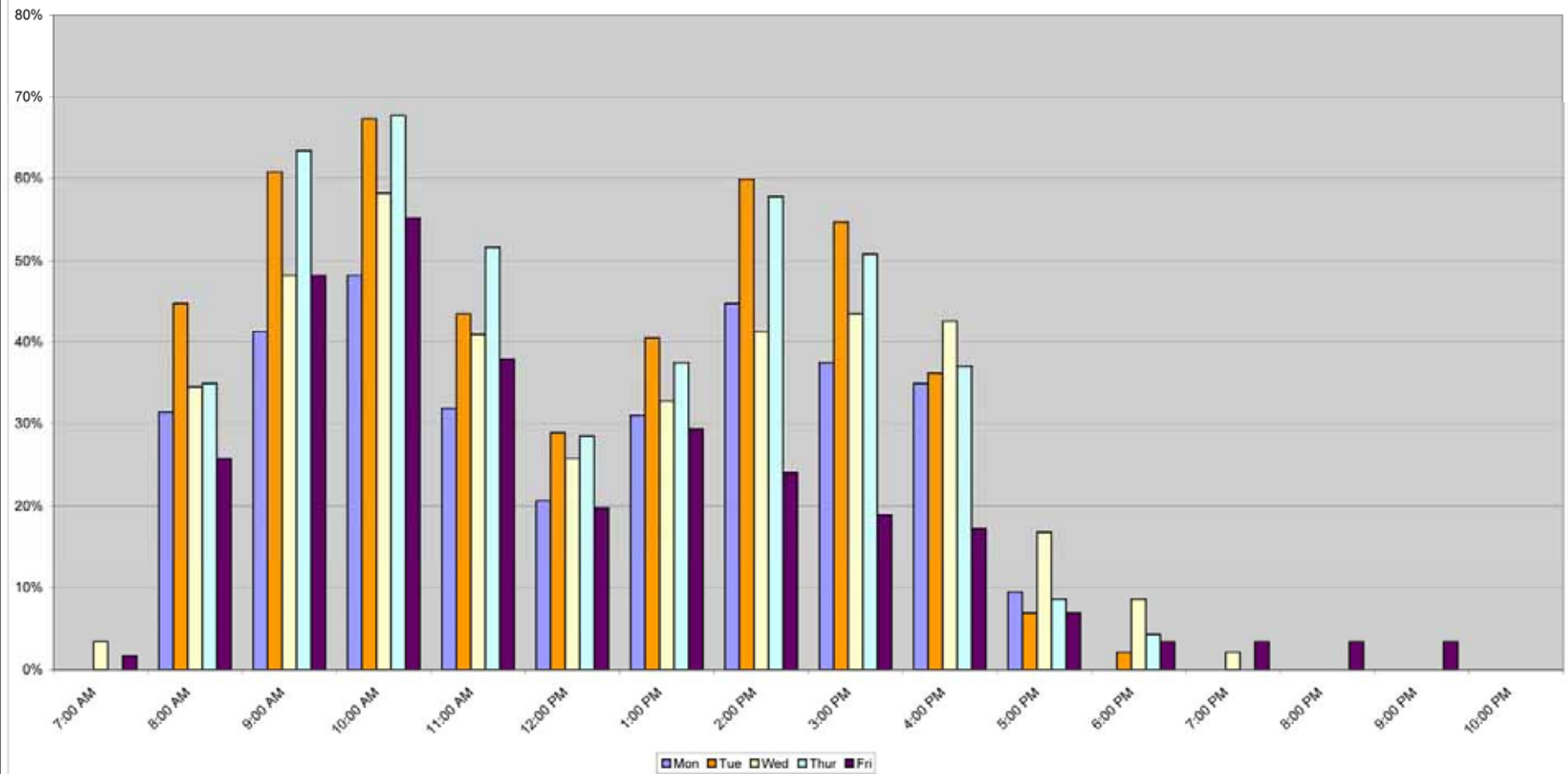
# Analysis of Space Needs

**SUNY DELHI COLLEGE**  
Class Laboratory  
Scheduled Weekly Room Hours by Room



# Analysis of Space Needs

SUNY DELHI COLLEGE  
Class Laboratory Utilization of Available Spaces  
By Time of Day and Day of Week



# Analysis of Space Needs

SUNY DELHI COLLEGE  
 Weekly Utilization of Class Laboratories with Scheduled Use  
 Low Station Use

Building	Room #	Area (NSF)	Physical Capacity	Total Scheduled Room Hours	Possible Weekly Student Contact Hours	Actual Weekly Student Contact Hours	Station Use Based on Physical Capacity
ETOWER	0405	1,127	24	12.0	288	162	56%
SM-HL	0017	2,740	20	18.0	360	201	56%
ATEC 2	0103	4,650	40	24.0	960	516	54%
FARNHL	0265	997	24	22.0	528	279	53%
FARNHL	0246	317	12	12.0	144	72	50%
TURF	0009	1,058	21	7.0	147	73	50%
SM-HL	0002	2,330	24	15.0	360	174	48%
ATEC 5	0101	882	25	4.0	100	48	48%
SM-HL	0018	1,703	24	8.0	192	90	47%
FARNHL	0267	1,078	24	15.0	360	160	44%
FARNHL	0146	2,427	35	15.0	525	232	44%
FARNHL	0115	930	30	18.0	540	236	44%
SM-HL	0003	2,405	20	22.0	440	189	43%
ETOWER	0410	1,144	24	11.5	276	118	43%
ETOWER	0402	1,369	32	9.0	288	99	34%
FARNHL	0228	1,193	32	23.0	736	236	32%
FARNHL	0122	815	15	9.0	135	41	30%
SOU-HL	0209	1,206	80	26.5	2,120	612	29%
<b>Total Scheduled Rooms:</b>	<b>58</b>	<b>98,300</b>	<b>1,393</b>	<b>19.2</b>	<b>2,7715.3</b>	<b>19,186.8</b>	<b>69%</b>

- > 2% annual growth
- > CLASSROOMS
- > WRU – 25.9; goal 30
- > Fill rate of classrooms – 60% goal 70%
- > CLASS LAB station sizes
- > Faculty FTE actual-160 offices-158

## Conclusions

- > Enrollment growth to 2025 – 985 FTE approximately 60 per year
- > Classrooms – more aggressive scheduling will create additional capacity in the short-term
- > Class laboratories – station sizes often less than guidelines indicating need for space in new or renovated space
- > Faculty office space at capacity; more flexibility in administrative space

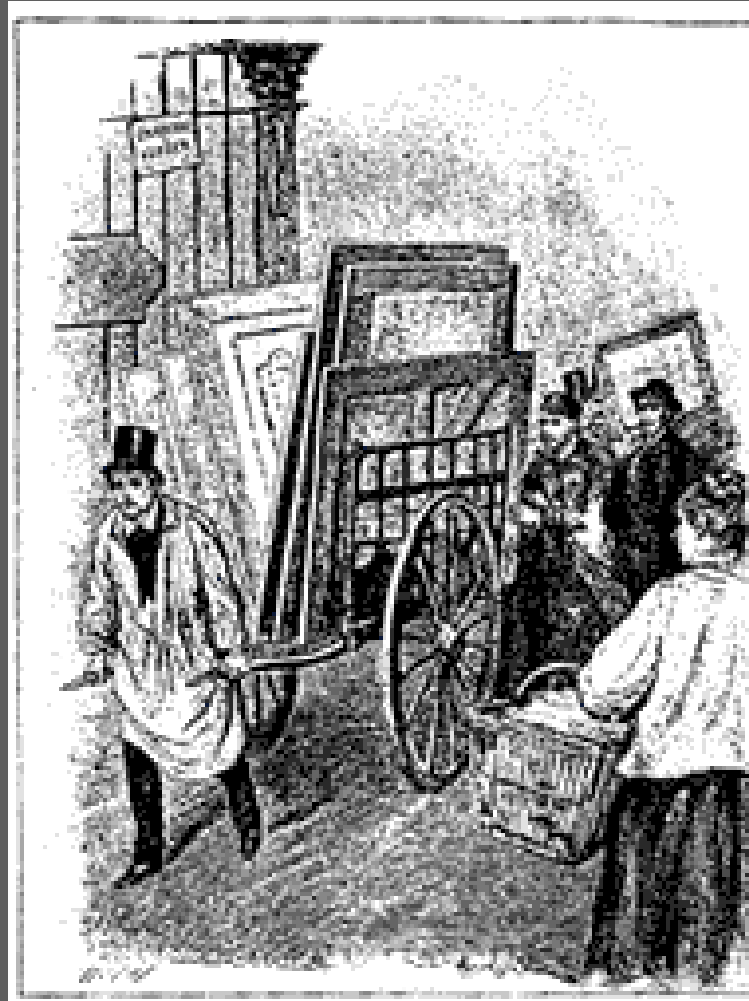


## Conclusions

- > Farrell Hall creates additional space & allows for adaptive reuse of current auxiliary and student spaces
- > Housing
  - On campus
  - Off campus
- > Deferred Maint.
- > Demolition of existing structures
- > Dining, study, student, & recreation space appears to be OK, with except of the condition of the Air Structure
- > Flagship Programs will require additional space: Nursing, Vet-Tech and Hospitality/Culinary Arts
- > Major limiting factors:
  - > Residential facilities
  - > Aging facilities-functionality & suitability
- > Current capacity
- > Future needs

# Charrette

- > Filling the charrette cart with ideas
- > Questions
- > Answers
- > Discussion
- > Opportunities



NCI Charrette System

SUNY

Facilities Master Plan

Wed. Oct. 21, 8am - 8pm  
Thurs. Oct. 22, 8am - 12pm

Alumni Hall  
Main Lobby

## Charrette

You're invited to stop by to help develop the future design of the Delhi Campus. Bring your best ideas, create new ones on the spot, or just listen to others! Spend 5 minutes or 5 hours... but come!

Charrette (n.) a French word for "cart or wagon" used to collect students' drawings of the Ecole des Beaux Arts in Paris during the 19th Century. History states students would transport the cart to an attempt to complete their projects. The term "charrette" has become a universal name used by architects and designers to describe an intensive effort to complete a project before a deadline.

# Alumni Hall - Great Location



Hospitality inside and out....

# Charrette

- > 250-300 students, faculty and administration
- > Planning and learning
- > Community



# What We Heard

## Important Assets:

- > Compact Campus
- > Low Student to Faculty Ratio
- > Rural Location
- > Faculty / Staff
- > Academic Programs



# What We Heard

## Critical Facility Needs:

- > Dining Hall
- > Technology upgrades
- > Student Housing
- > Parking
- > Day Care Facility



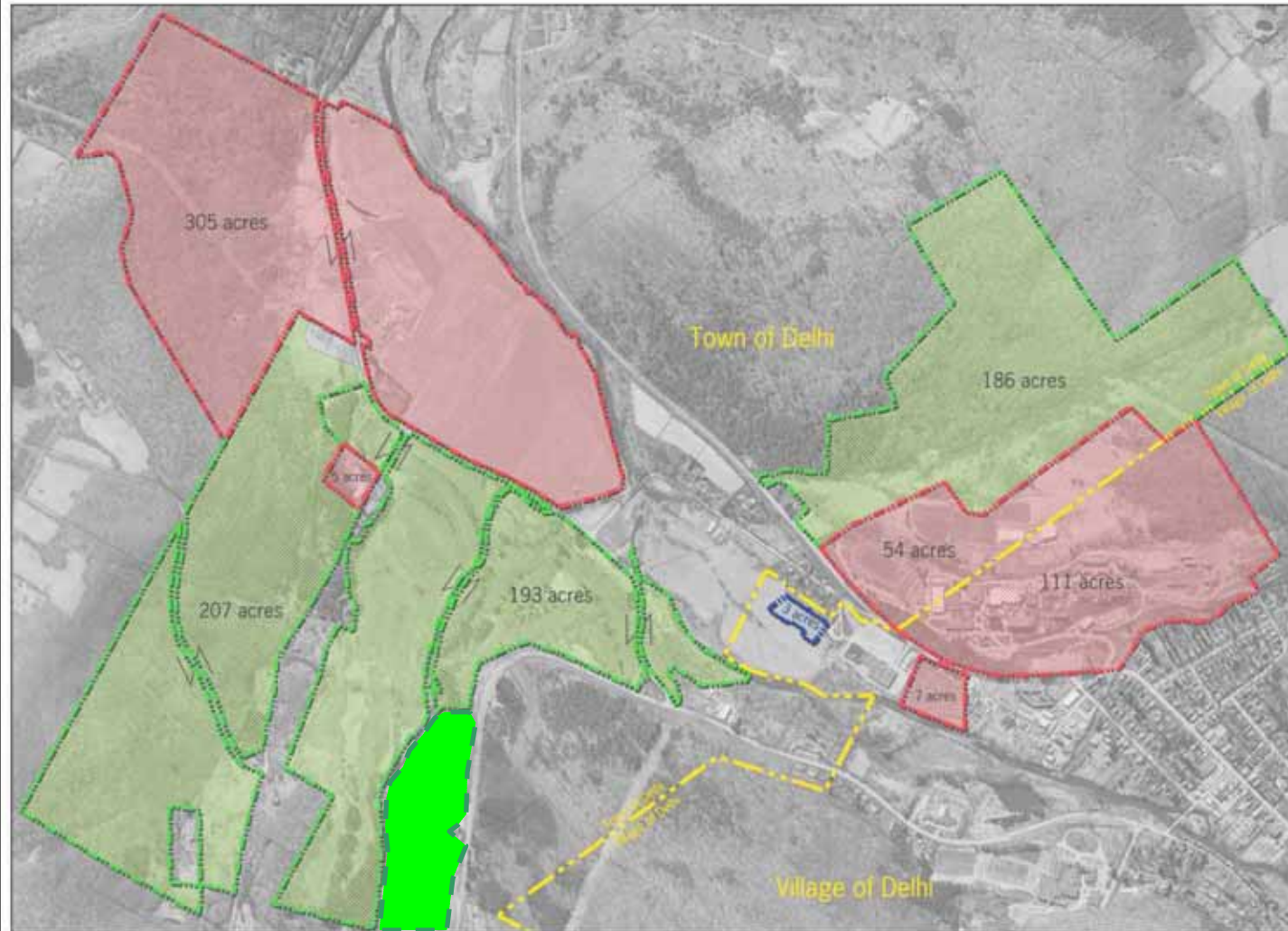
# What We Heard

Best Social Space on Campus:

- > My room
- > Library café
- > Farrell Hall (missing consensus)



# Property Ownership



## DRAFT PROPERTY OWNERSHIP

SUNY DELHI  
Facility Master Plan  
October 2009

### KEY

#### PROPERTY OWNERSHIP

- SUNY AT DELHI
- COLLEGE FOUNDATION AT DELHI
- RIVERVIEW AT DELHI, INC.

Note: Aerial Photography was flown in 2004 and does not accurately depict any improvements / expansions undergone since that time.

SA PROJECT # 0903030 - JULY # 020810  
Copyright © 2009 Saratoga Associates. All Rights Reserved.  
This map is computer generated using data acquired by Saratoga Associates from various sources and is intended only for reference, conceptual planning and presentation purposes. This map is not intended for and should not be used to establish boundaries, property lines, location of objects or to provide any other information typically needed for construction or any other actions where engineered plans or land surveys are required.  
© 2009 RIVERVIEW, INC. 31200 Development/Construction/RCR/ Master Plan.mxd

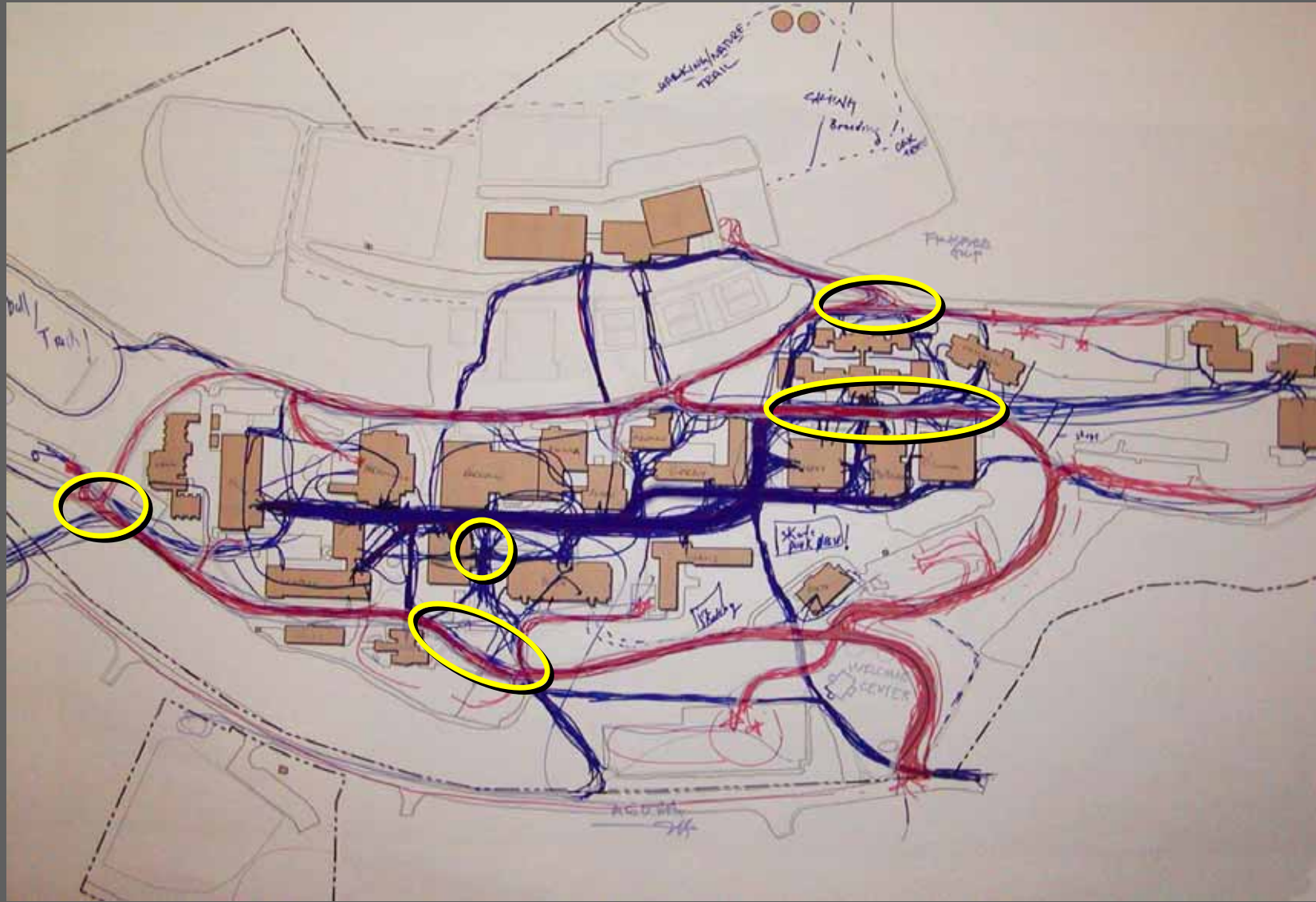
**SARATOGA  
ASSOCIATES**

Landscape Architects, Architects,  
Engineers, and Planners, P.C.  
NEW YORK CITY | SARATOGA SPRING | SHARLOTTE





# What We Learned

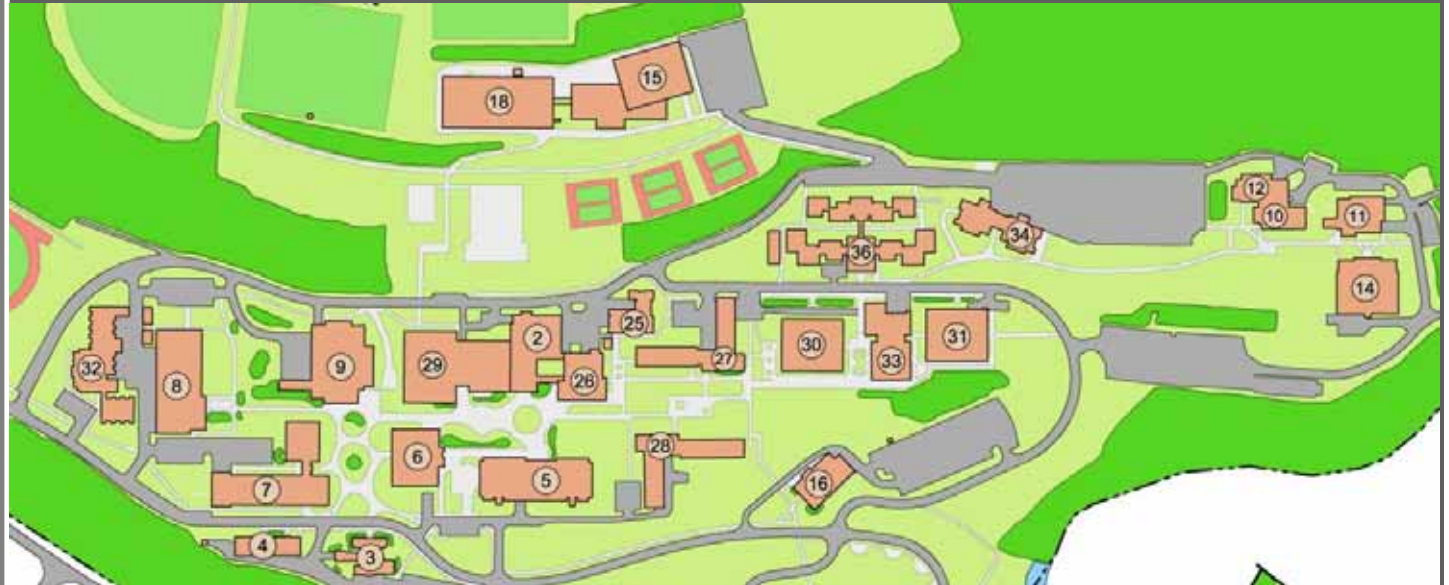


# On Charrette - Security



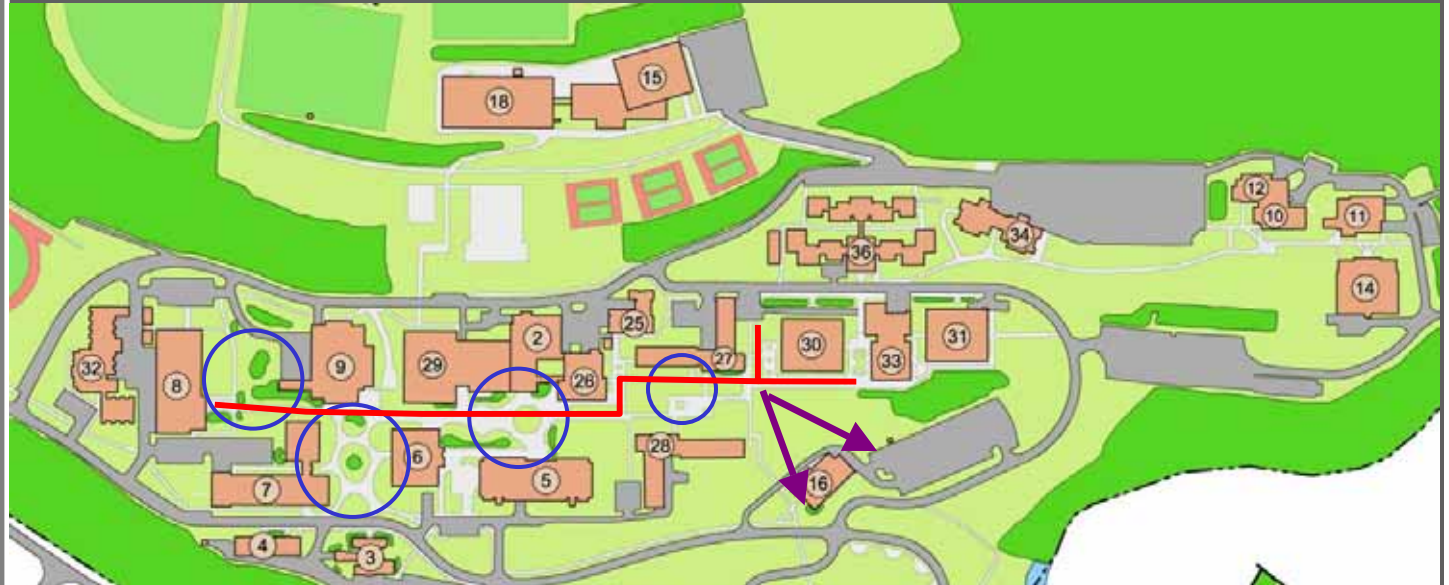
# Campus Accessibility

- > Recent Campus Improvements
- > Dubois access
- > Evacuation Chair
- > Bronco Bus
- > Planning and identification needs
- > Dormitories, restrooms, building access
- > Campus Committees



# Campus Open Space / Landscape

- > Sequential and transition spaces
- > Pavement materials
- > Tree Canopy
- > Potential sculpture locations
- > Lighting



# Parking

- > Desired proximity
- > Mid-day transition
- > Adequate supply
- > ADA parking / shuttle
- > Increase shuttle / stops



PARKING SUMMARY

LOT	NAME	STAFF	STUDENT	HANDICAPPED	OTHER	TOTAL
A	UPDAY CARE	14	103	2	8	128
B	RUSSELL HALL	19	27	4	3	53
C	GERRY HALL	11	0	2	1	14
D	O'CONNOR HALL	10	163	0	0	173
E	THURSTON HALL	107	0	7	3	117
F	CATSKILL HALL	0	228	2	2	232
G	BELOW UPD	0	253	0	0	253
H	SMITH HALL	45	0	5	0	50
I	TRACK	0	87	0	0	87
J	SMITH HALL	29	0	0	0	29
K	ALUMNI & FOREMAN HALLS	22	0	1	0	23
L	DUBOIS HALL	8	0	1	0	16
M	WALL SERVICE	7	0	1	0	8
N	BACK ROADWAY	0	0	4	67	71
O	FOREMAN	6	0	1	0	7
P	BOILER ROOM	5	0	0	0	5
Q	FARNSWORTH	14	0	2	0	16
R	MURPHY SERVICE	1	0	4	0	5
S	BUSH VISITOR	1	0	4	4	9
T	E-TECHTECH CAMPUS	0	43	0	0	43
U	CLARK FIELD HOUSE	0	0	5	54	60
TOTAL		307	904	45	140	1396



# What We Heard...

> Farrell Hall



# What We Heard...

- > Farrell Hall
- > Remove North Hall
  - > Day Care
  - > University Police



# What We Heard...

- > Farrell Hall
- > Remove North Hall
- > South Hall
  - > Nursing
  - > Surge
  - > Removal





# What We Heard...

- > Farrell Hall
- > Remove North Hall
- > South Hall
- > Thurston Hall
  - > Welcome Center
  - > Hospitality
  - > Admissions
  - > University Police



# What We Heard...

- > Farrell Hall
- > Remove North Hall
- > South Hall
- > Thurston Hall
- > Air Structure
  - > Life span
  - > Scheduling
  - > Competitive-ness



# What We Heard...

- > Farrell Hall
- > Remove North Hall
- > South Hall
- > Thurston Hall
- > Air Structure
- > Sanford Hall
- > Determine use, Renovate and allocate space



# Athletic Facilities

- > Condition fair to good
- > Baseball/ softball fields
- > Basketball / tennis
- > Air Structure
- > Multi-purpose field
- > Scheduling



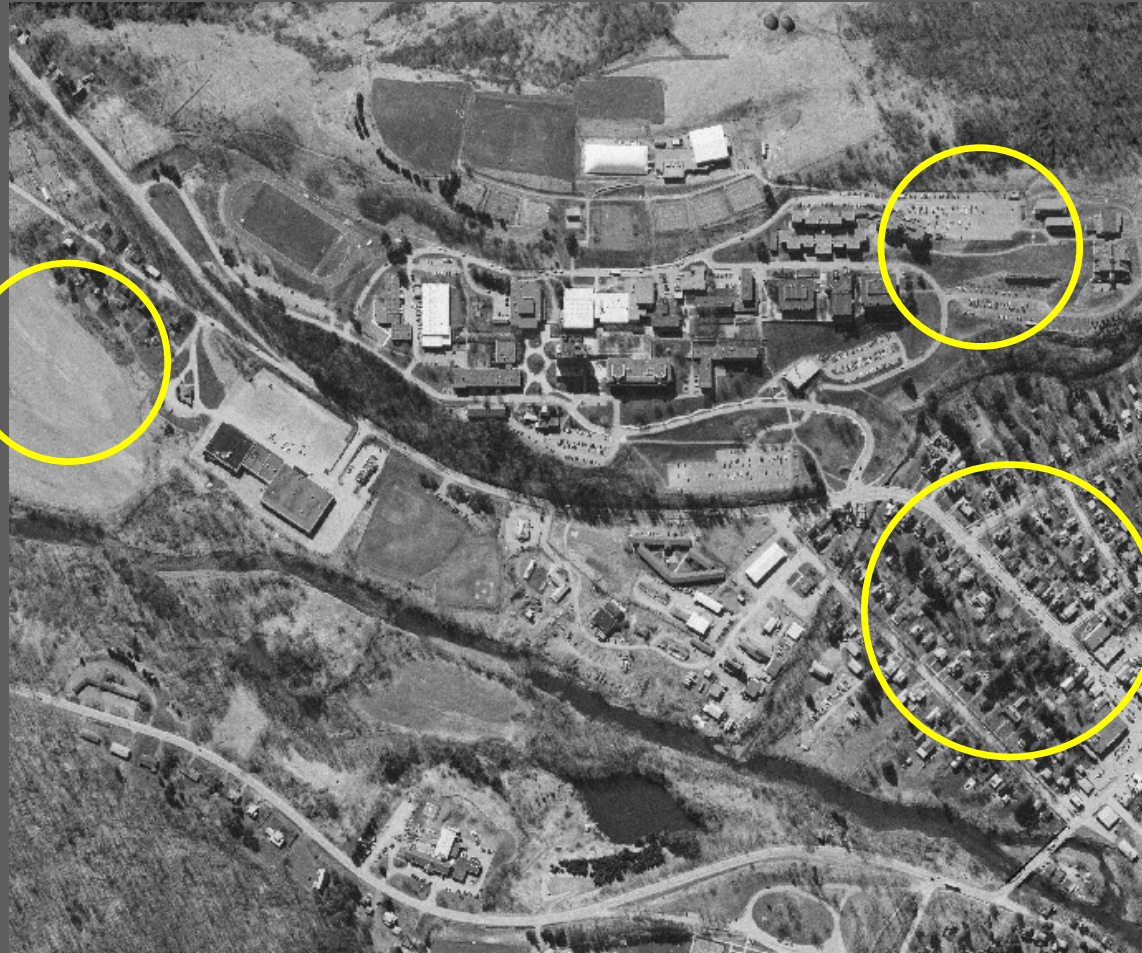
# Student Housing

Current Capacity

On-Campus

Off-Campus

- > Village
- > Riverview
- > Other?
- > Preferred Style
  - > Suite/Apart
  - > Single
  - > Double





Thank you SUNY Delhi for making this Charrette a success!

### Next Steps

- > Charrette summary
- > Finalize space needs
- > Concept development

