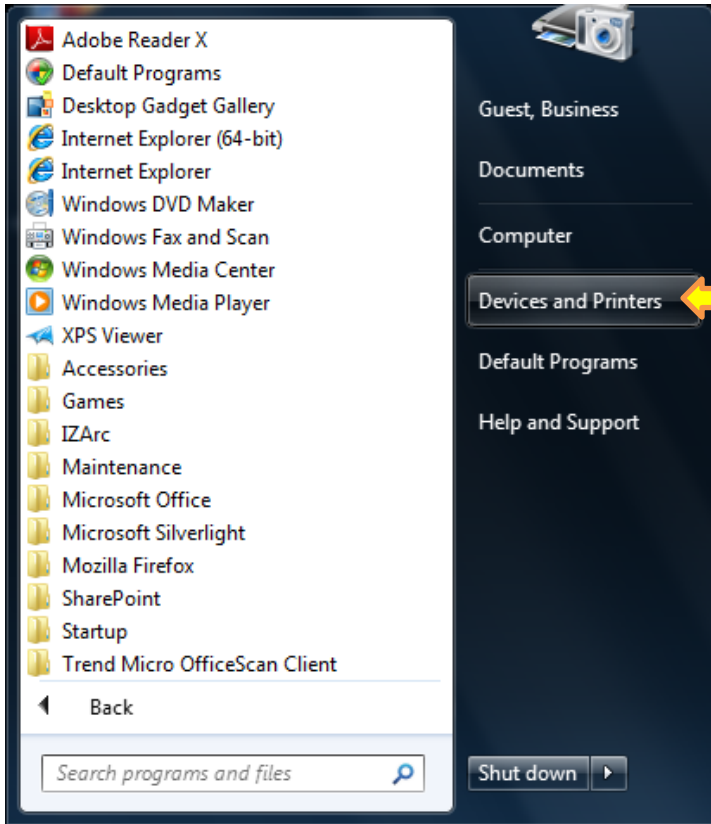
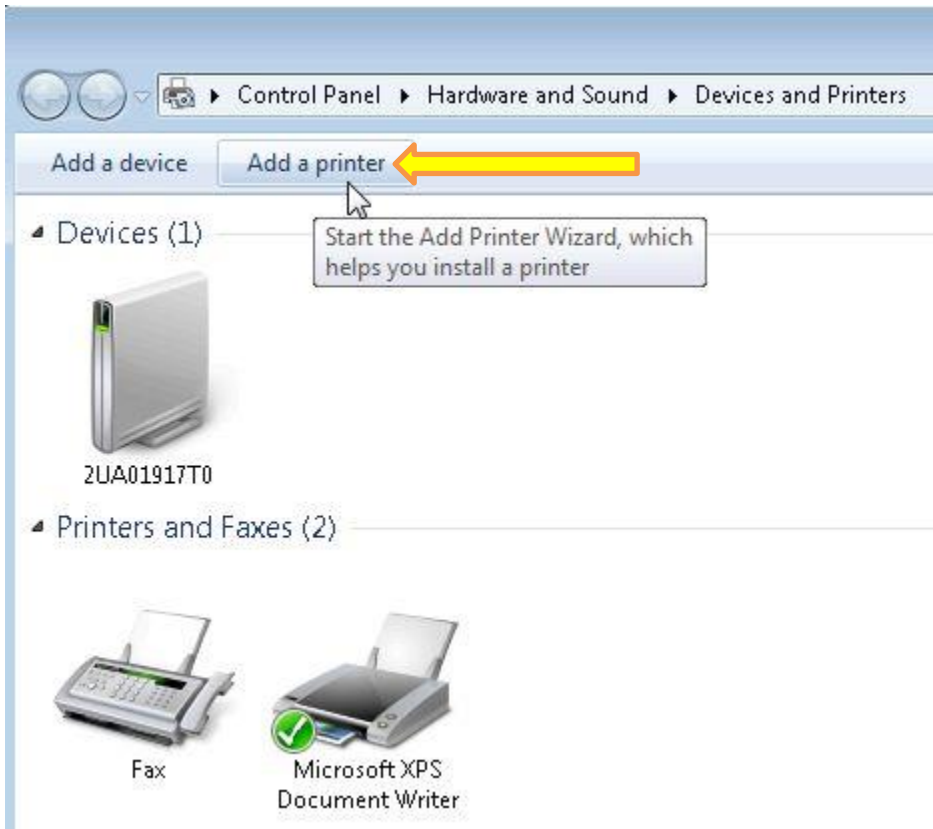


How to Add a Printer on a Windows 7 Computer

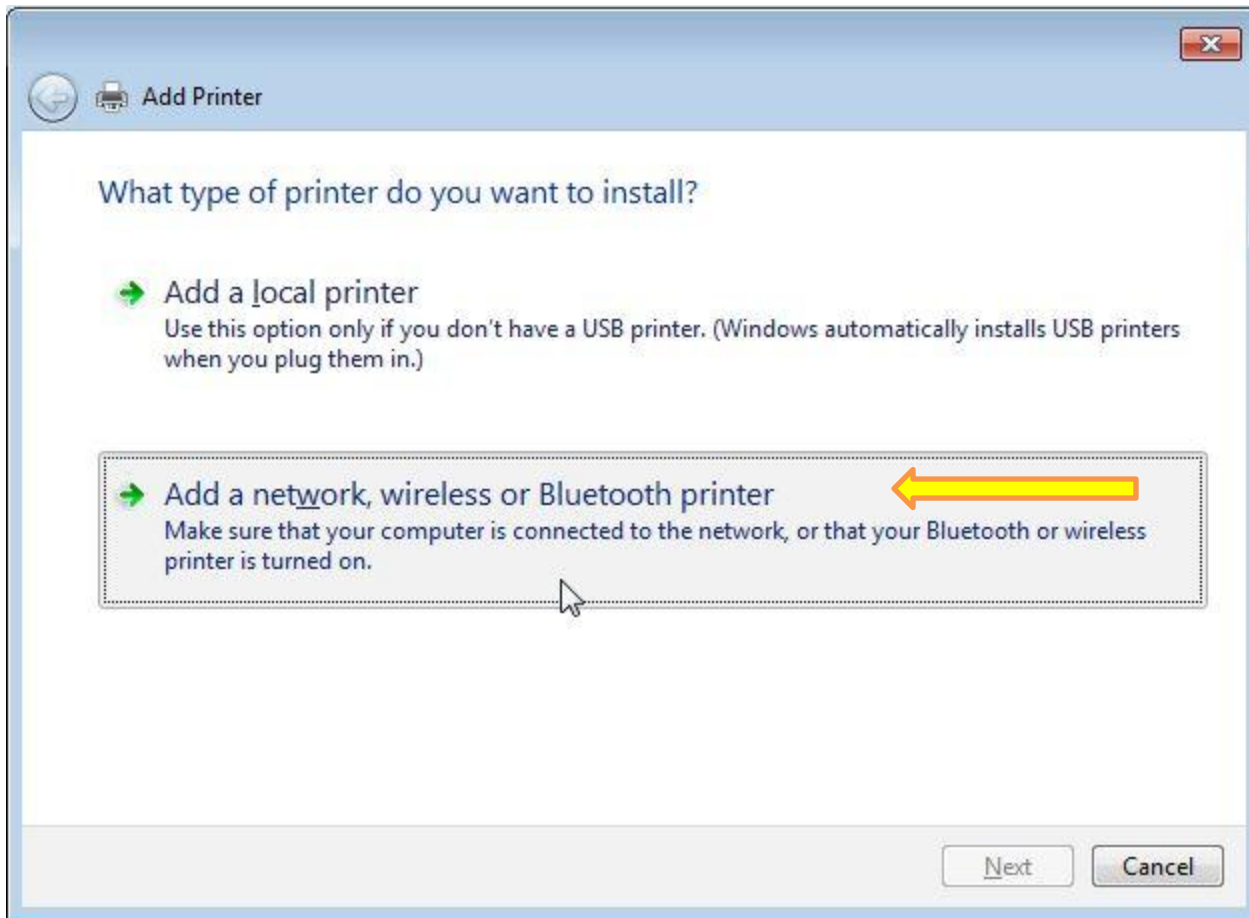
Start Button > Devices and Printers



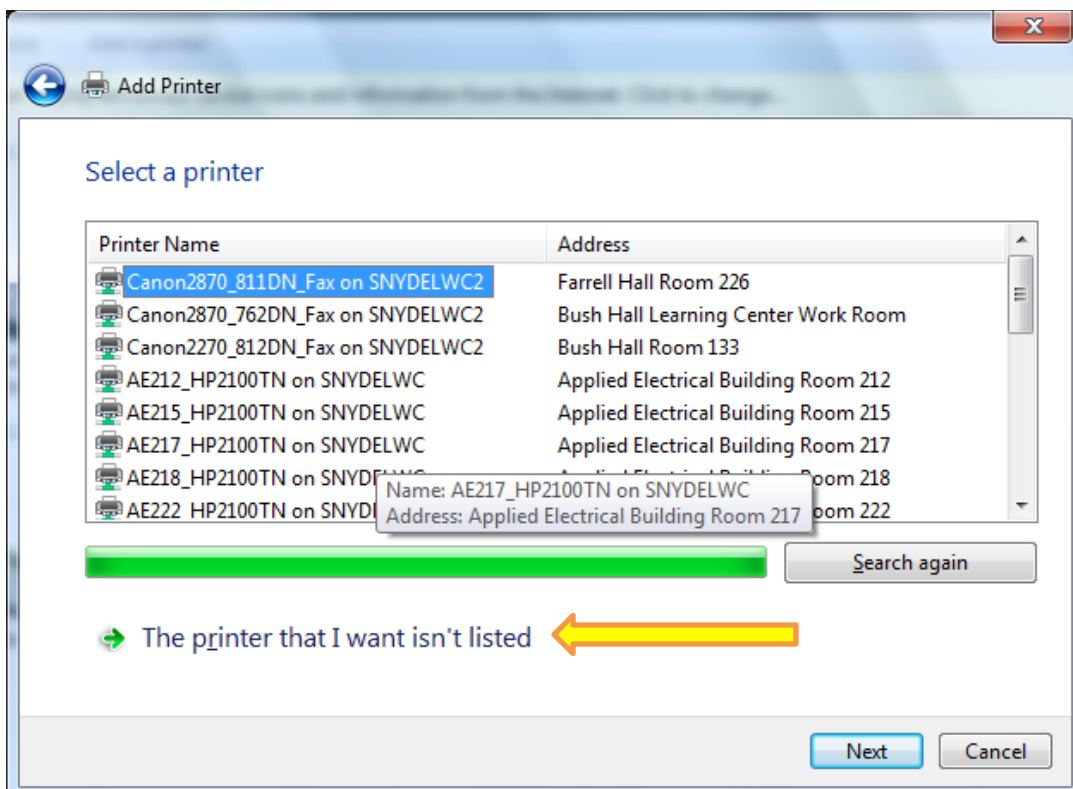
Click 'Add a printer'



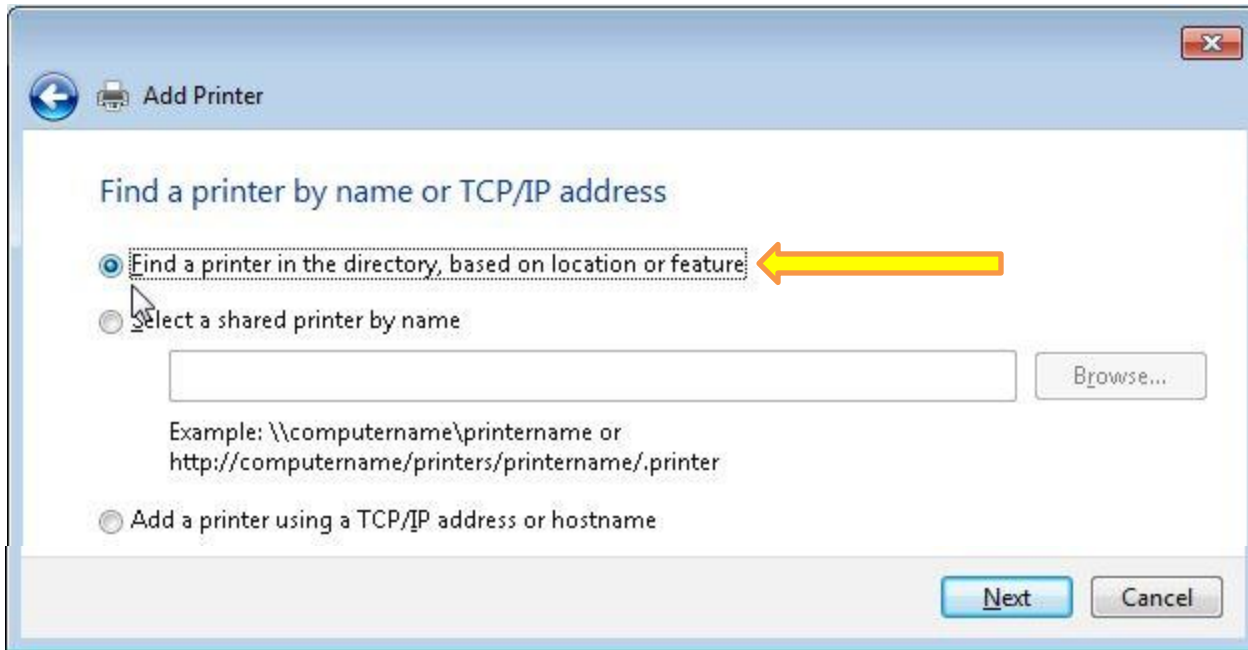
Click 'Add a Network, wireless or Bluetooth printer' > Next



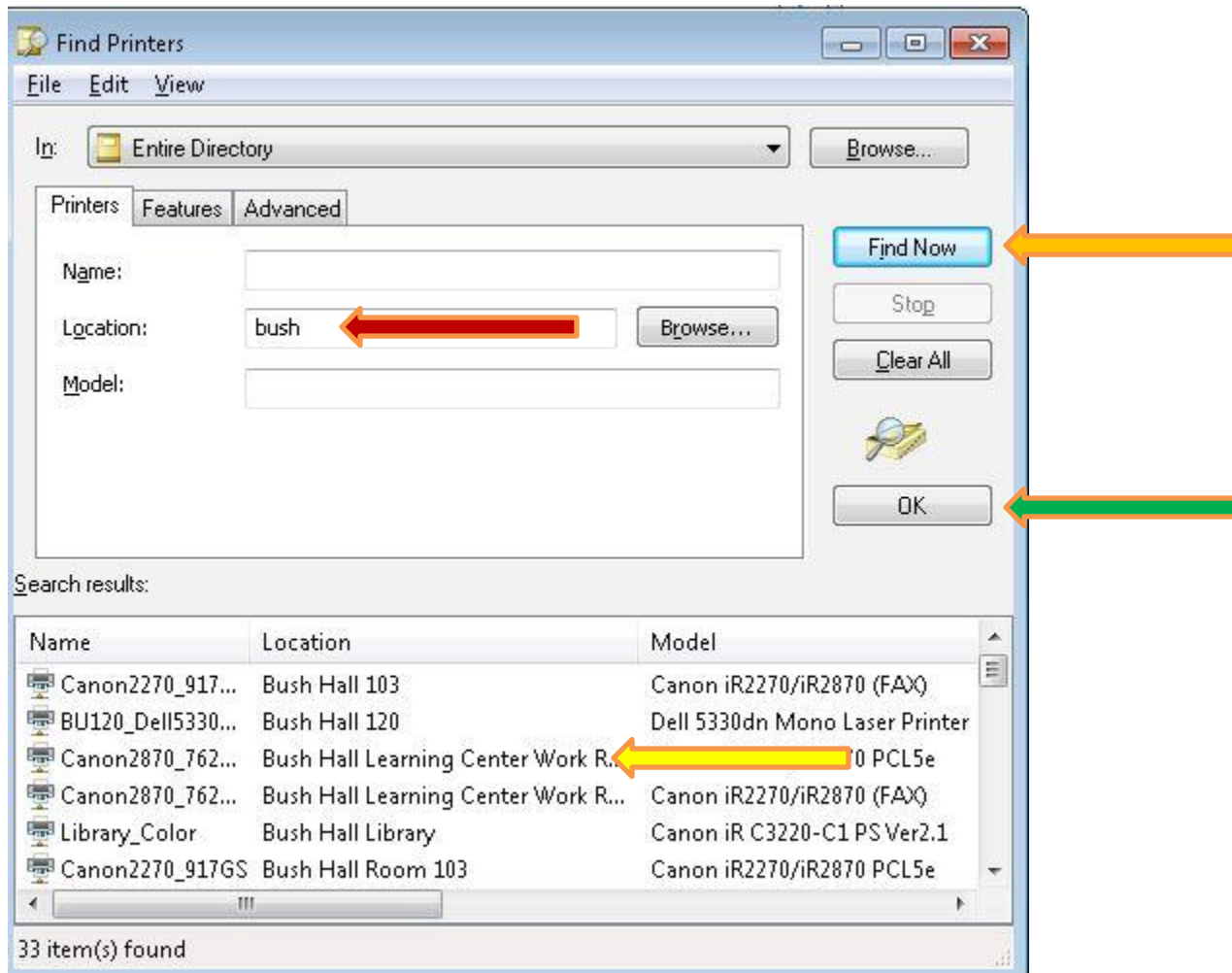
Click 'The printer that I want isn't listed' (the list on top doesn't display all network printers) > Next



Click 'Find a printer in the directory, based on location or feature' > Next



Click inside the 'Location:' box, type First 3-4 letters of building name > Click 'Find Now' button
Click printer you want under 'Search results:' > OK



A window will appear stating 'You've successfully added *name of printer* on *name of server*' > Next > Finish